

FOR LEASE

THE JEFFERSON BUILDING

DOWNTOWN ORLANDO, FLORIDA

DOWNTOWN OFFICE BUILDING

The Jefferson Building
118 E. Jefferson Street
Downtown Orlando, Florida 32801

3 Story Office Building
7,945 +/- RSF

Built in 1925
Renovated 1980

Available Office Space:

1st Floor: 2,637 sf @ \$21/sf full service
2nd Floor: Individual offices
(monthly prices shown)
3rd Floor: 2,671 sf @ \$21/sf full service

- In the heart of downtown Orlando
- Metered parking and loading zone by front door
- Multiple parking garages nearby
- Walk to restaurants, Orange County Court-house, and post office
- On Lymmo transit line
- Fine wood & glass interior finishes

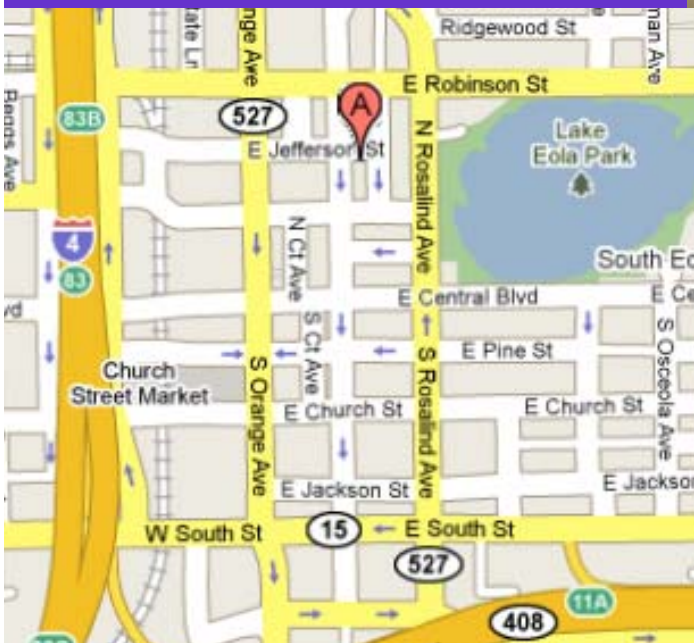


Marc Cook, CFP® - mc@tomcookcommercial.com
Tom Cook, CPM, SIOR - tc@tomcookcommercial.com

(407) 849-0102 phone

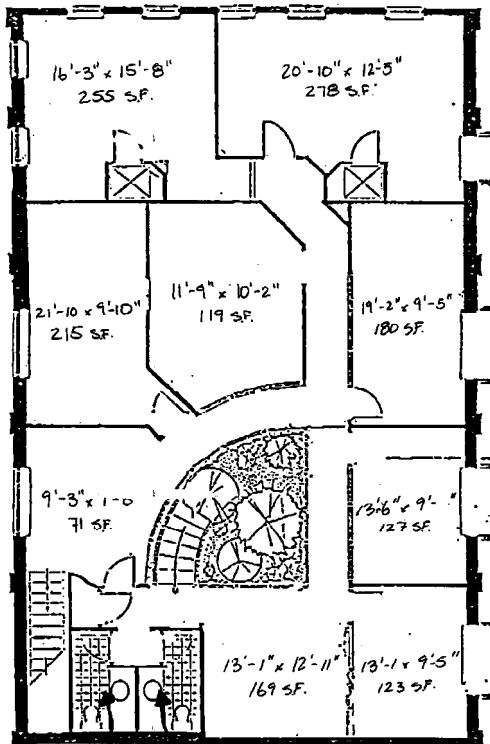
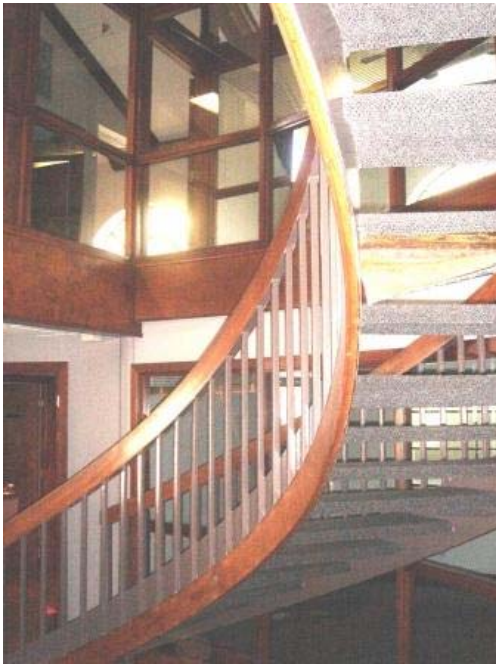
TomCook
Commercial

Licensed Real Estate Broker



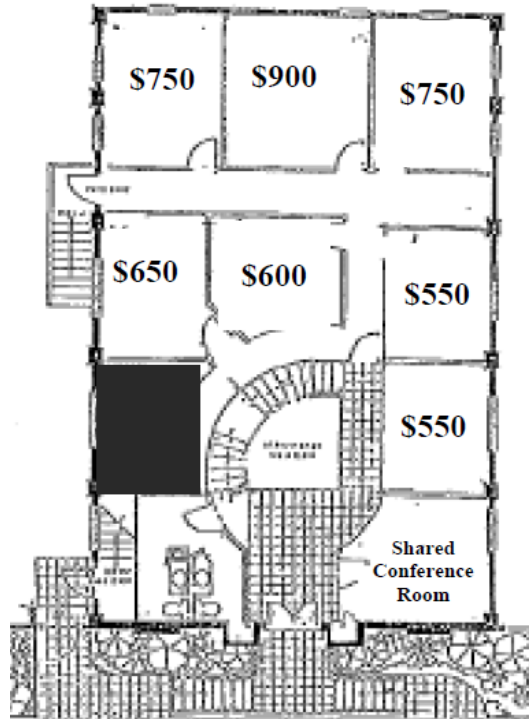
No warranty or representation, expressed or implied, is made as to the accuracy of the information contained herein and same is submitted subject to errors, omissions, change of price, rental or other conditions, withdrawal without notice, and to any special listing conditions imposed by other principals.

THE JEFFERSON BUILDING 118 E. JEFFERSON STREET

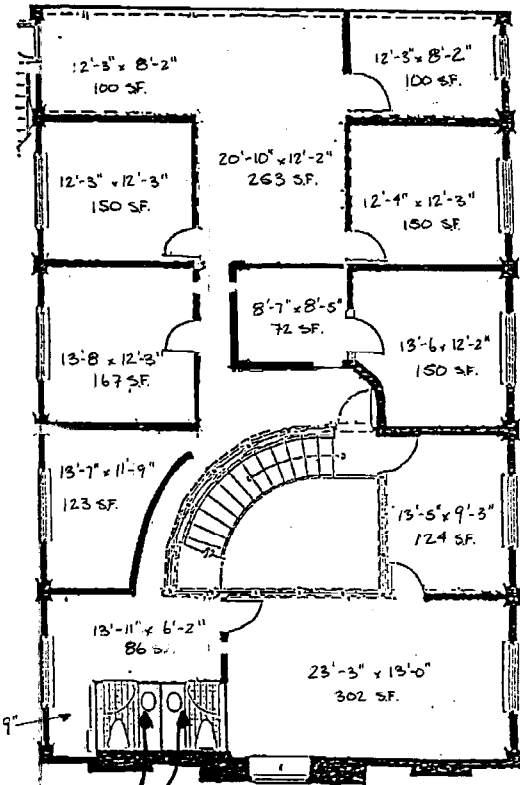


**2,637 SF
FIRST FLOOR**

Single Units



**2,637 SF
SECOND FLOOR**



**2,671 SF
THIRD FLOOR**

No warranty or representation, expressed or implied, is made as to the accuracy of the information contained herein and same is submitted subject to errors, omissions, change of price, rental or other conditions, withdrawal without notice, and to any special listing conditions imposed by other principals.