

043010

COLLIERS
INTERNATIONAL

www.colliersboise.com

**OFFICE SPACE
for LEASE**

Extended Systems Building

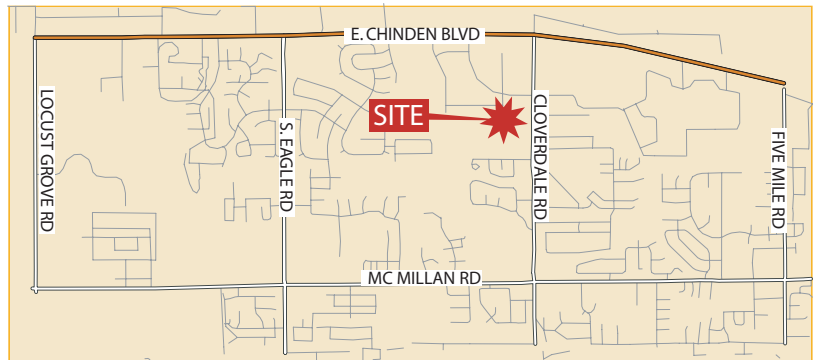
5777 North Meeker | Boise, ID



This Class A office building is located in the Boise Research Park. The property provides competitive rates and ample parking.

PROPERTY PROFILE

- Close to several amenities, restaurants and West YMCA
- Easy access to Chinden Boulevard and Eagle Road



PROPERTY HIGHLIGHTS

- Lease Term: 3-5 Years
- Lease Type: Full service (excluding janitorial)
- T.I. Allowance: Negotiable
- Parking: 4/1000

Available Space:	Suite	Size	Rate
	Basement	22,427 SF	\$ 2.00/PSF, NNN
	First Floor	±23,000 SF	\$13.50/PSF, FSEJ

FOR MORE INFORMATION:

WAYNE SLAUGHTER, CCIM

208-472-2853

wayne.slaughter@colliersidaho.net

Sales & Leasing | Investment | Property Management | Site Selection | Valuation | Consulting

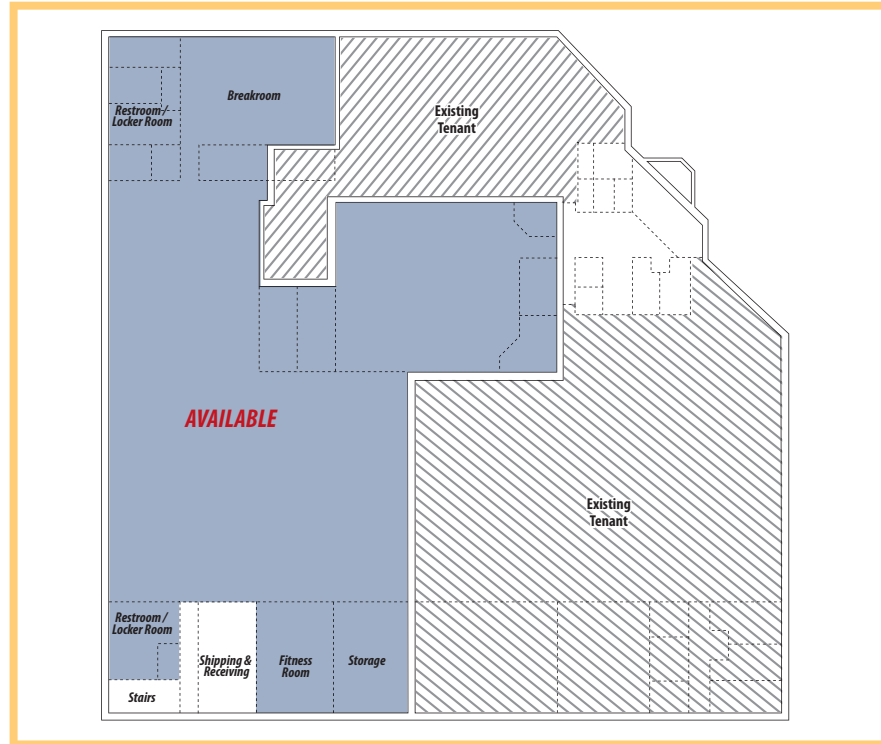
BOISE ● 755 West Front Street, Suite 300 ● Boise, Idaho 83702 ● 208.345.9000 ● www.colliersboise.com

COLLIERS
INTERNATIONAL

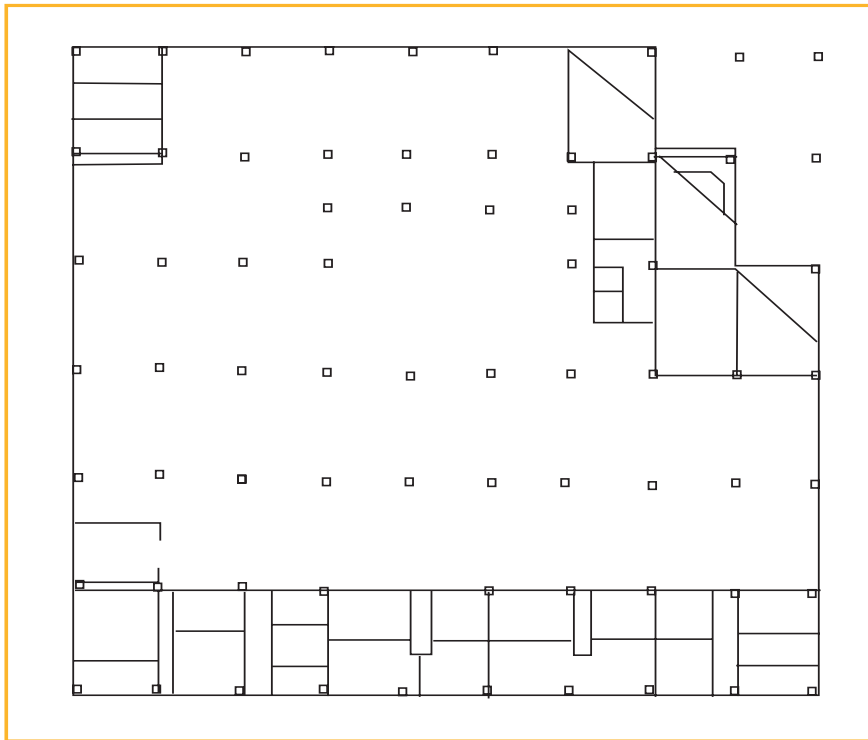
OFFICE SPACE
for LEASE

Extended Systems Building

5777 North Meeker | Boise, ID



FIRST FLOOR



BASEMENT

FOR MORE INFORMATION:

WAYNE SLAUGHTER, CCIM

208-472-2853

wayne.slaughter@colliersidaho.net

BOISE
755 W. Front St., Suite 300
Boise, Idaho 83702
208.345.9000

NAMPA
5660 E. Franklin Rd., Suite 110
Nampa, Idaho 83687
208.472.1660

COLLIERS
INTERNATIONAL