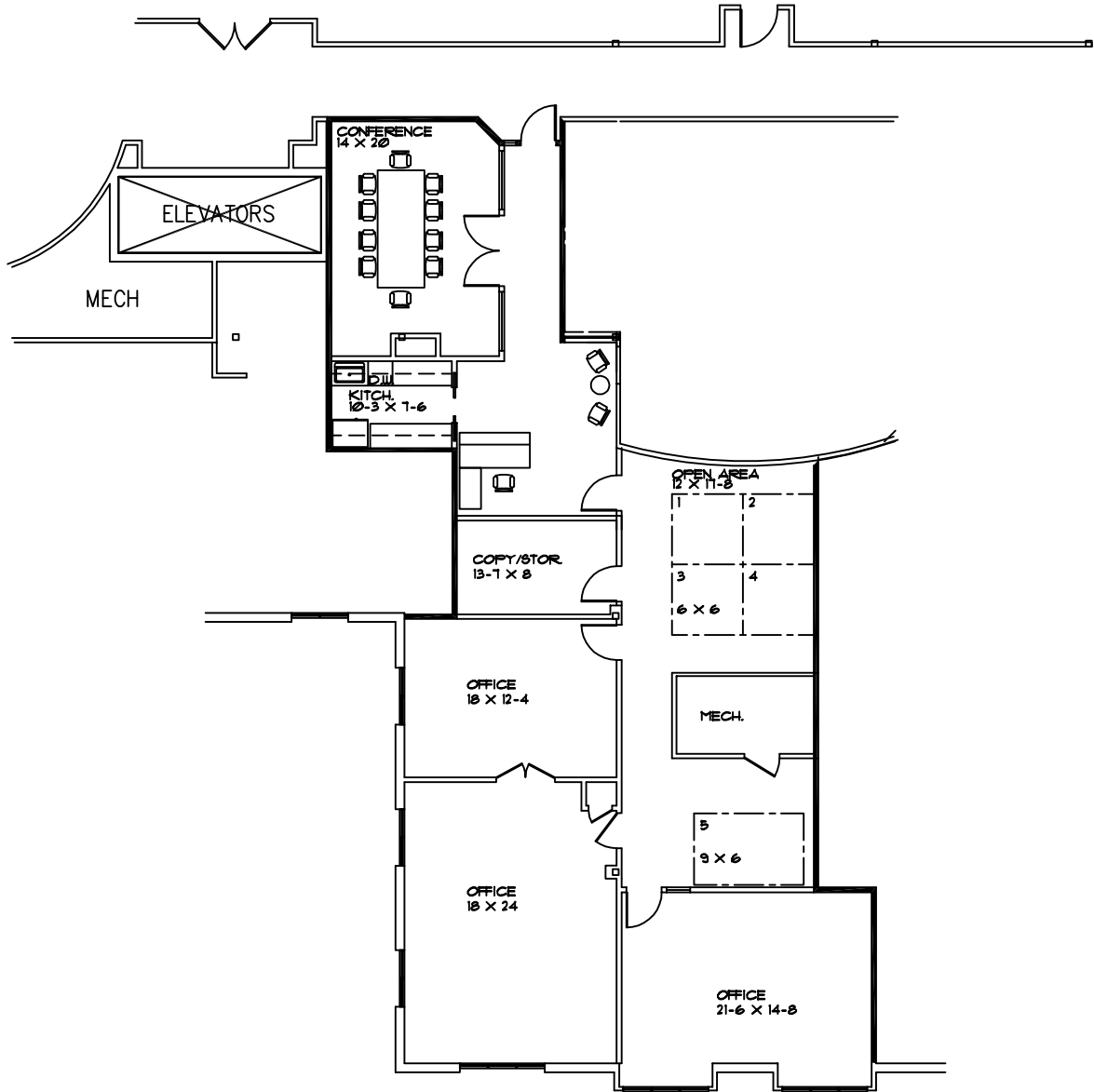


**GOVERNORS PLACE**

33 BLOOMFIELD HILLS PARKWAY  
 BLOOMFIELD HILLS, MI.  
 SUITE 290  
 APPROX. 2,800 R.S.F.



*Beachum & Poeser*

MANAGEMENT CORPORATION

CALL:  
 MICHELLE RILEY  
 248-647-7500  
 ( PLAN NOT TO SCALE )