

082610

FOR LEASE > INDUSTRIAL WAREHOUSE



# 2000 East Yamhill Road

BOISE, ID



## 2000 East Yamhill Road > Industrial Warehouse

- > ±37,320 SF industrial warehouse on 4.919 acres
- > 2.5 acres of excess fenced yard with road base
- > ±4,320 SF of office space, upstairs and down
- > Heavy electrical service, 2000 amps, 3-phase
- > Rail service potential behind building
- > 1 dock and 4 grade-level doors
- > Building is divisible
- > 22' clear height
- > Excellent location, one-half mile from I-84
- > Lease Rate: **\$.35 NNN PSF**
- > NNN Costs: **\$.09 PSF**

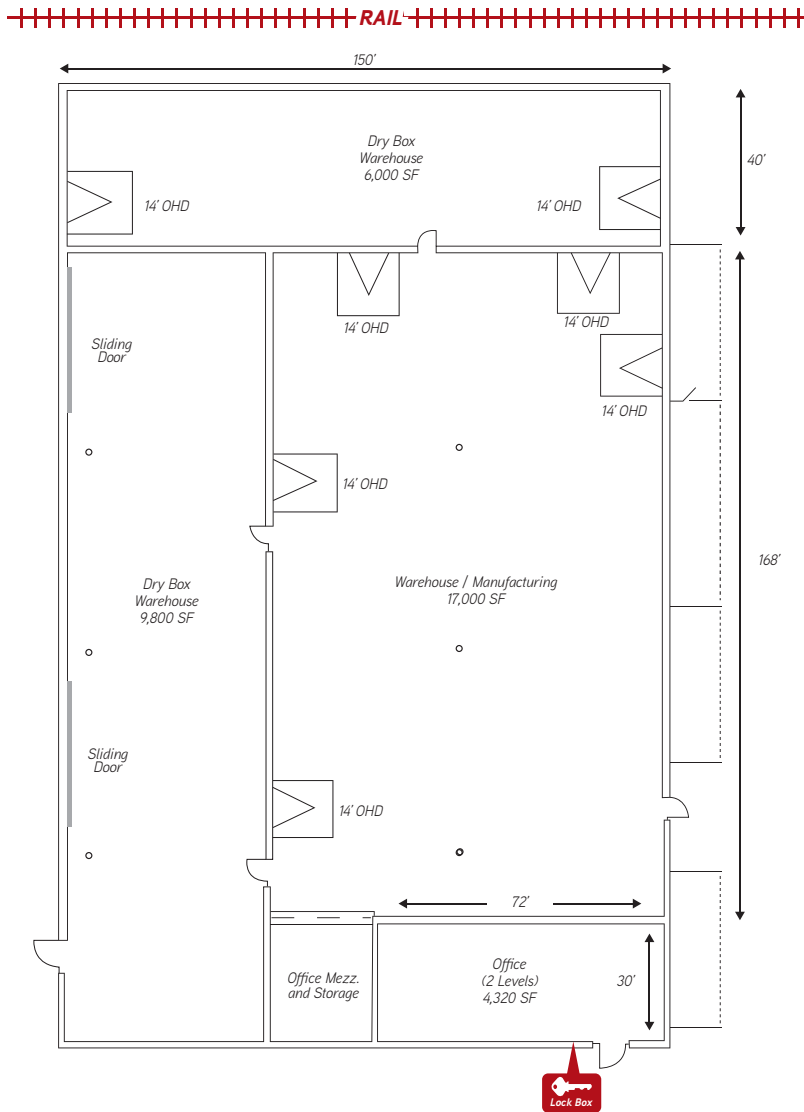


AGENT: STEVE FOSTER  
 208 472 2834  
 BOISE, ID  
 steve.foster@colliers.com

AGENT: JAKE TUCKER  
 208 472 2842  
 BOISE, ID  
 jake.tucker@colliers.com

COLLIERS INTERNATIONAL  
 755 West Front Street  
 Suite 300  
 Boise, ID 83702  
 www.colliers.com

# 2000 E. Yamhill Road > Industrial Warehouse



AGENT: STEVE FOSTER  
 208 472 2834  
 BOISE, ID  
 steve.foster@colliers.com

AGENT: JAKE TUCKER  
 208 472 2842  
 BOISE, ID  
 jake.tucker@colliers.com



The information contained herein has been obtained from reliable sources, but is not guaranteed.