

# For Lease

## 43 E. Gish Road, San Jose

# \$.99/sf Full Service

**YOUR NAME HERE**



**Two Full Floors Available – Elevator Service**

**±10,000 square feet available**

**(divisible to 5,000 square feet)**

**Building signage available**

**Easy Access to 101/880/87**

**Walking distance to Light Rail**

**Flexible Terms**

**Please call for info**

*For more information, please  
contact:*

**Kevin Peixoto**  
**408-983-0825**

**kevin@kpacommercial.com**  
**www.kpacommercial.com**

**Jeff Petulla**  
**408-888-4859**

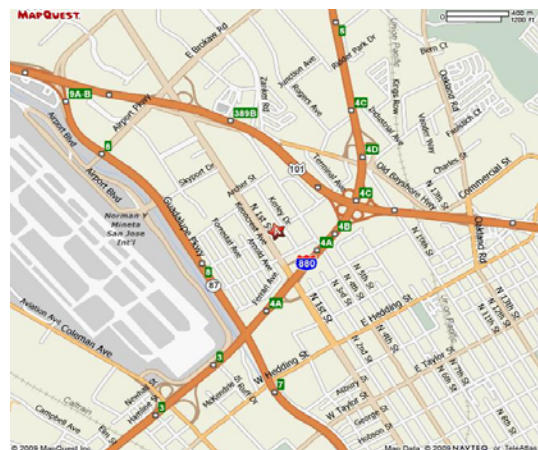
**jpetulla@heilinc.com**



Lic.# 01411086

**Heil & Associates**

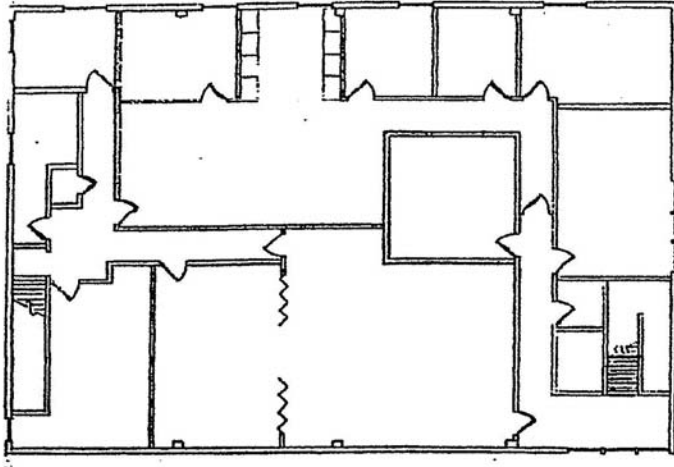
Lic.# 00852399



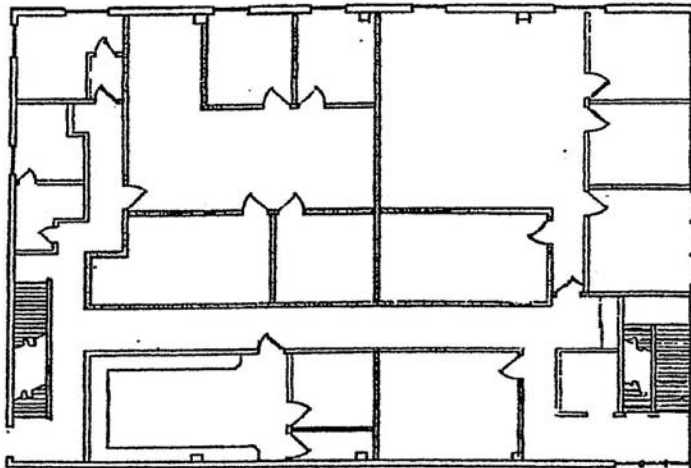
*The information contained herein was obtained from sources believed reliable; however, KP & Associates/Heil & Associates makes no guarantees, warranties or representations as to the completeness or accuracy thereof. The presentation of this property is submitted subject to errors, omissions, change of price or conditions prior to sale or lease, or withdrawal without notice.*

# For Lease

## 43 E. Gish Road, San Jose



**3RD FLOOR**



**2ND FLOOR**

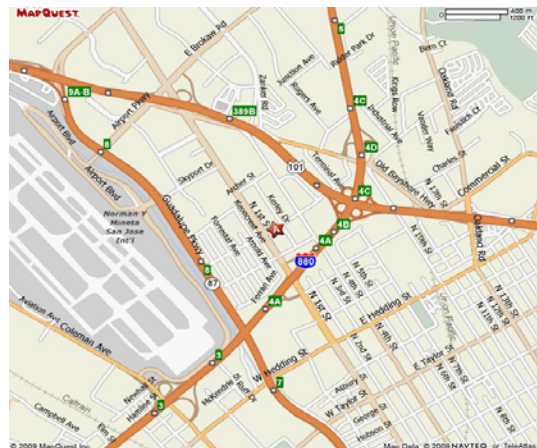
*For more information, please  
contact:*

**Kevin Peixoto**  
**408-983-0825**

**kevin@kpacommercial.com**  
**www.kpacommercial.com**

**Jeff Petulla**  
**408-888-4859**

**jpetulla@heilinc.com**



**Heil & Associates**  
Lic.# 00852399

*The information contained herein was obtained from sources believed reliable; however, KP & Associates/Heil & Associates makes no guarantees, warranties or representations as to the completeness or accuracy thereof. The presentation of this property is submitted subject to errors, omissions, change of price or conditions prior to sale or lease, or withdrawal without notice.*