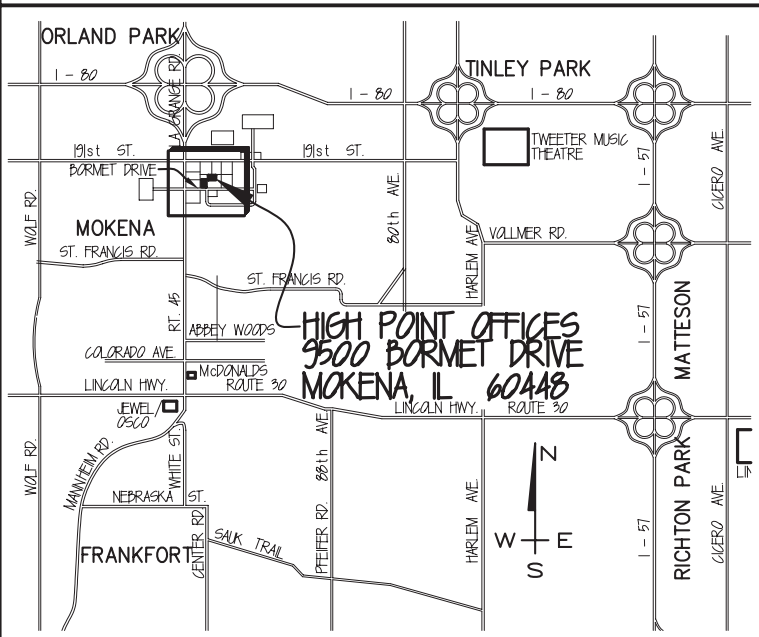
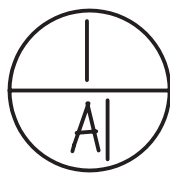
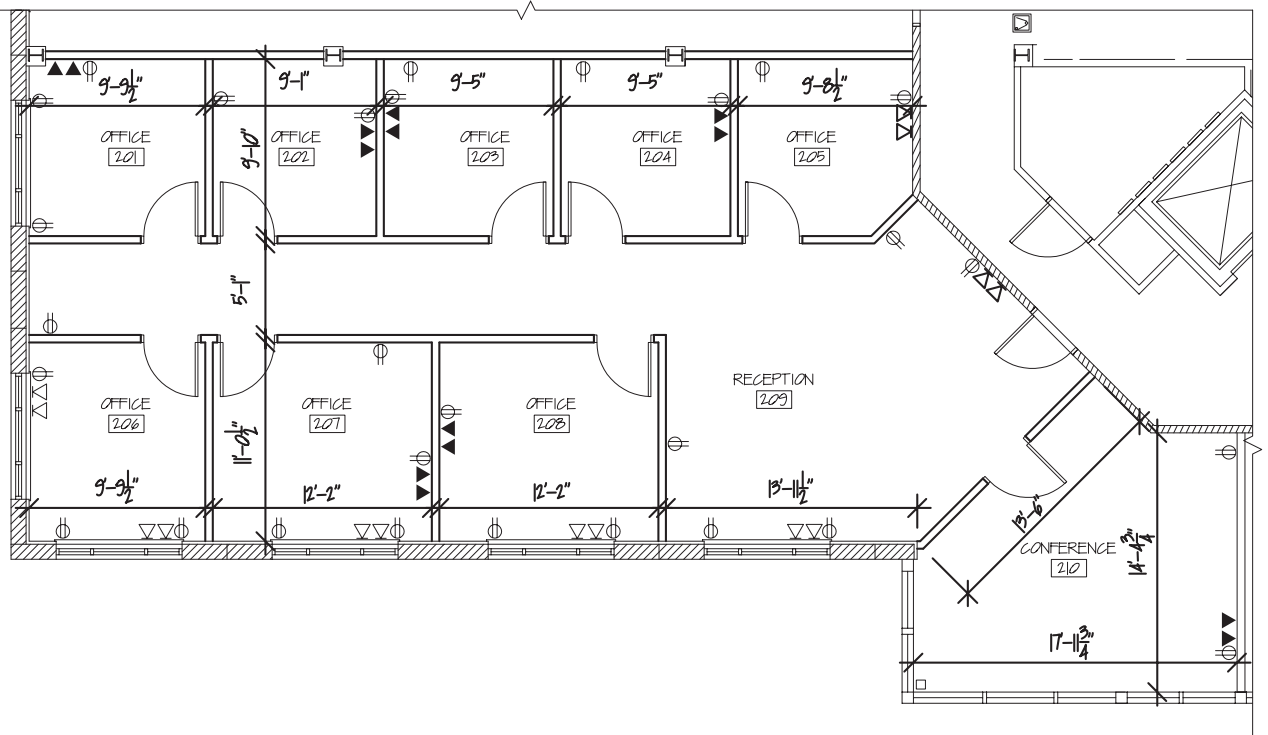


LEGEND MAP 

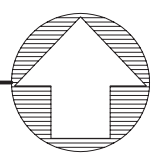


LOCATION MAP

HIGH POINT I 9500 BORMET DRIVE MOKENA, IL 60448



FLOOR PLAN - SUITE 204



NTS.
2,044 SF OF RENTABLE SPACE, WITH
1,775 SF BEING USABLE OFFICE SPACE

**CALL JOHN OLIVIERI AT
815-469-6400
FOR MORE INFORMATION**