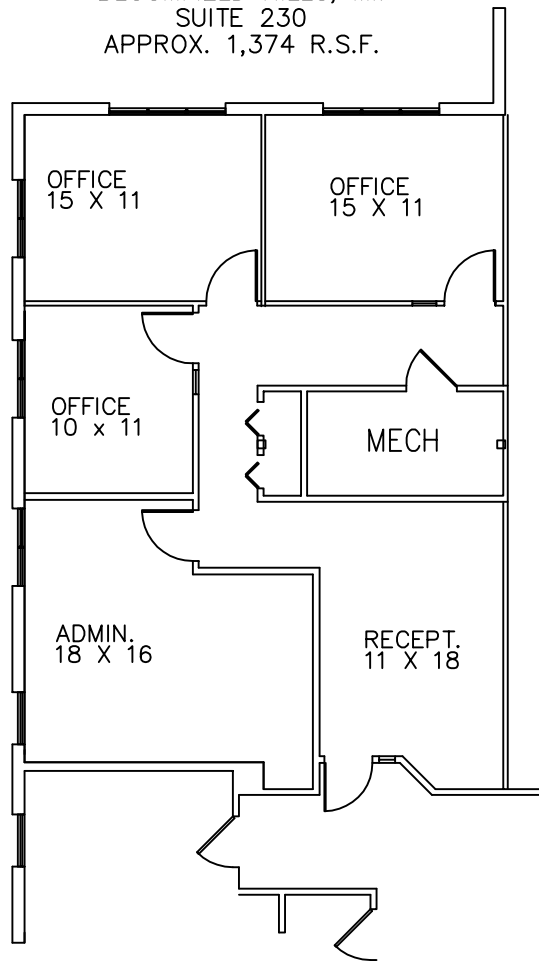


**GOVERNORS PLACE**

33 BLOOMFIELD HILLS PARKWAY  
 BLOOMFIELD HILLS, MI.  
 SUITE 230  
 APPROX. 1,374 R.S.F.



*Beachum & Poeser*

MANAGEMENT CORPORATION

CALL:

MICHELLE RILEY

248-647-7500

( PLAN NOT TO SCALE )