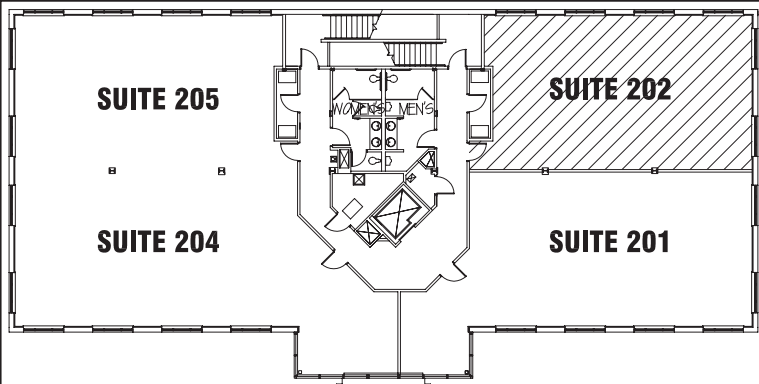
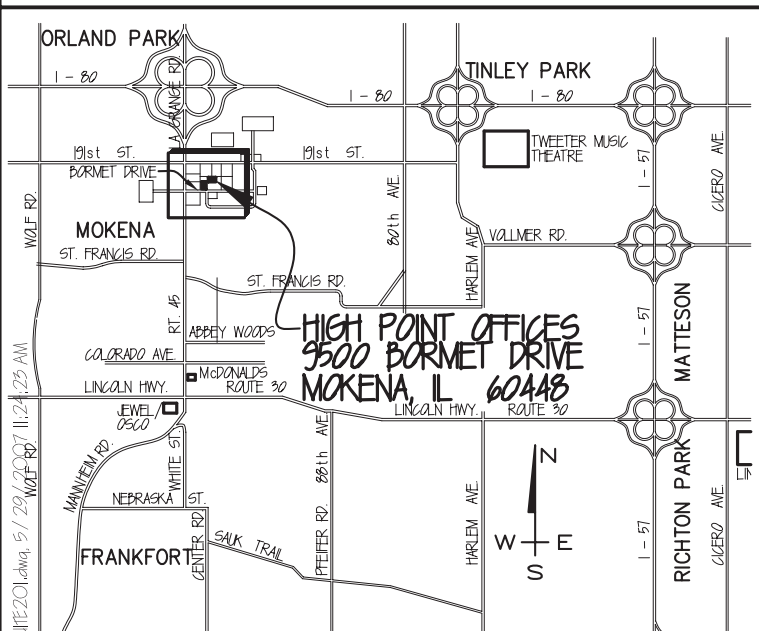
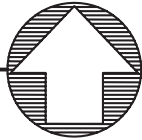


# HIGH POINT II 9550 BORMET DRIVE MOKENA, IL 60448

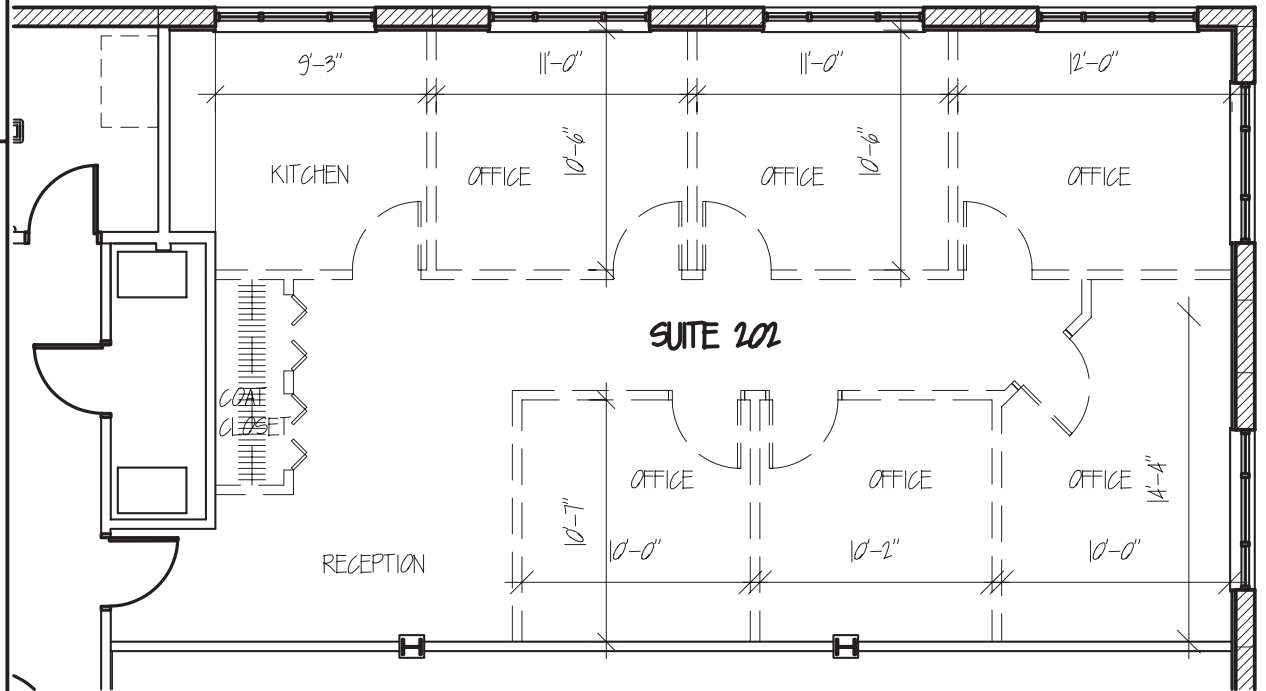


LEGEND MAP



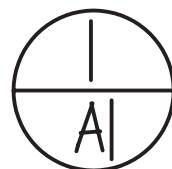
HIGH POINT OFFICES  
9500 BORMET DRIVE  
MOKENA, IL 60448

LOCATION MAP

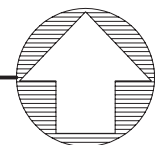


**NOTE:**

- \* ABOVE IS A STANDARD BUILDOUT OPTION.
- \* SPACE IS BARE RIGHT NOW.



## FLOOR PLAN - SUITE 202



N.T.S.  
1,554 SF OF RENTABLE SPACE, WITH  
1,350 SF BEING USABLE OFFICE SPACE

**CALL JOHN OLIVIERI AT  
815-469-6400  
FOR MORE INFORMATION**