

Survey of Property Transfer, Adam Conforti to Monarch Industries, Inc., by J.H. Mourey, L.S., recorded on December 4, 1973 in Map File MM-8C-33 in the Herkimer County Clerk's Office.

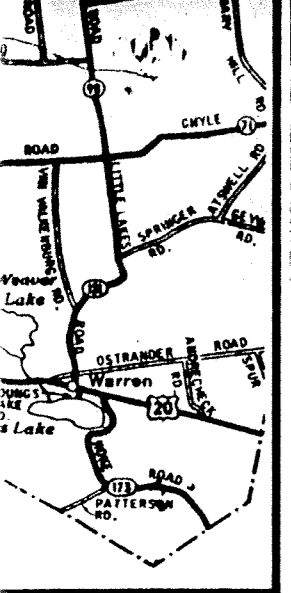
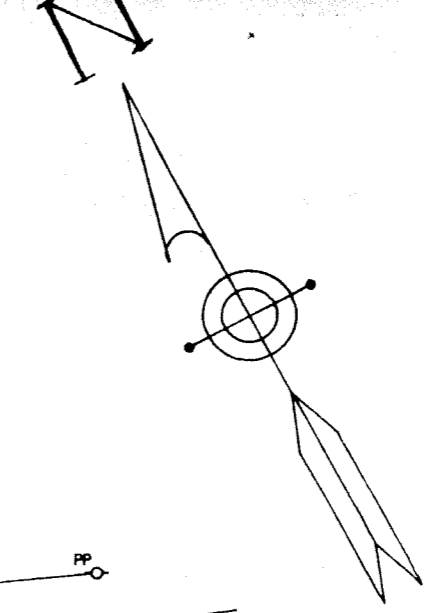
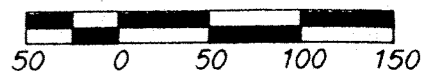
(2)
 "Survey of Property Transfer, Adam Conforti to Conforti Manufacturing, Inc., by J.H. Mourey, L.S., recorded on December 4, 1973 in Map File MM-8C-32 in the Herkimer County Clerk's Office.

DEAN PROBERT, by Adams Assoc., recorded on November 28, 1979 in Map File JJ-2A-44 in the Herkimer County Clerk's Office.

(4)
 "Map Showing Lands of Ken-Com," by Milton A. Green, PLS., recorded on December 20, 1986 in Map File JJ-10A-16 in the Herkimer County Clerk's Office.

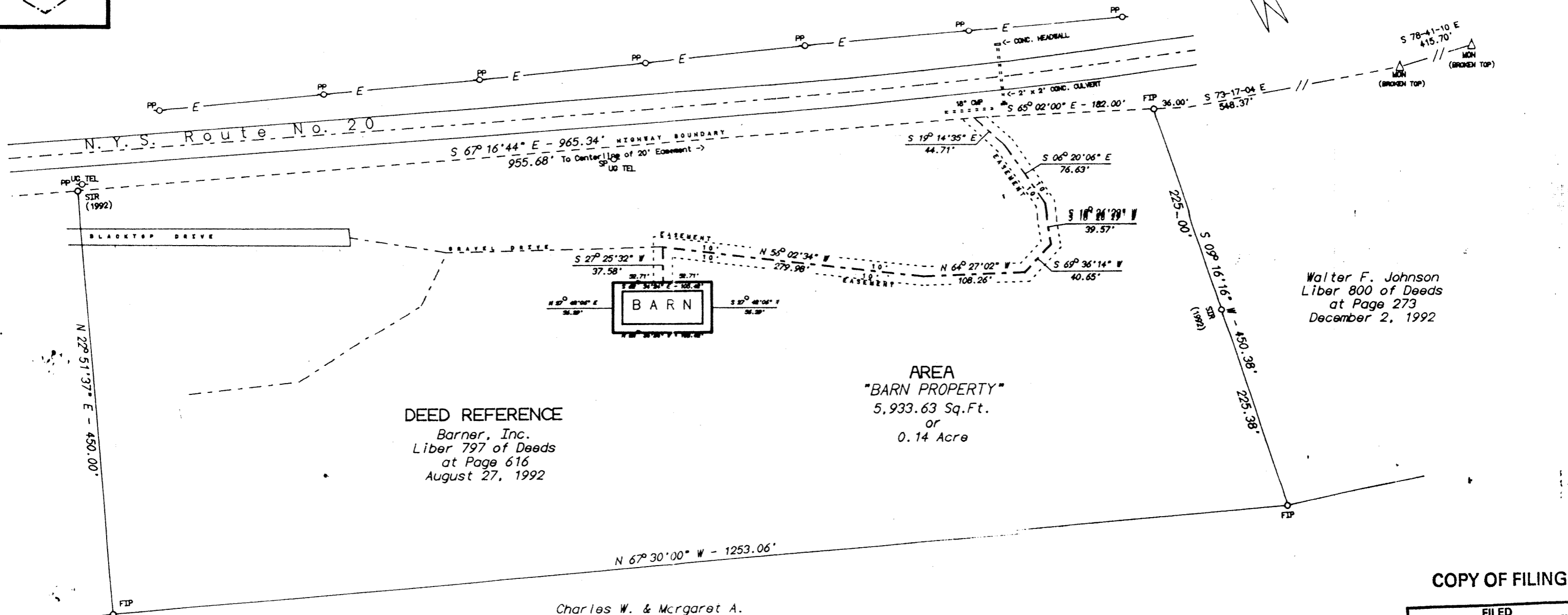
(5)
 "Map Showing Lands of New York Job Development Authority," by Edward L. Beauchamp, PLS., recorded on December 2, 1992 in Map File JJ-17B-21 in the Herkimer County Clerk's Office.

- APPEAR ON THIS DRAWING:
- SIR = Set Iron Rod (8/20/1992)
 - FIP = Found Iron Pipe
 - PP = Power Pole
 - SP = Service Pole
 - △ MON = Concrete ROW Monument
 - = Property Line (This Survey)
 - - - = Highway Boundary
 - · - · = Centerline
 - · - · = Centerline of 20' Easement
 - // - = Broken Dimension Lines
 - E - = Overhead Power Line



1AP

ys E.
 eds
 993



DEED REFERENCE
 Barner, Inc.
 Liber 797 of Deeds
 at Page 616
 August 27, 1992

AREA
 "BARN PROPERTY"
 5,933.63 Sq.Ft.
 or
 0.14 Acre

Walter F. Johnson
 Liber 800 of Deeds
 at Page 273
 December 2, 1992

Charles W. & Margaret A.
 Bullard, et.al.
 Liber 709 of Deeds
 at Page 310
 September 2, 1986

- NOTE -
 The intent of this map is to show a parcel of land encompassing an existing barn situate on property of Barner, Inc. The boundary line is to be established (10) feet from the face of said barn on

COPY OF FILING

FILED
 HERKIMER CO. CLERK'S OFFICE
 DEC 28 1995

MAP

ION
 No. 49648.