

# Beachum & Roeser

EST. 1976

## DEVELOPMENT & MANAGEMENT CORPORATION

31100 Telegraph Road, Suite 200  
Bingham Farms, MI 48025

Phone: 248-647-7500

Fax: 248-647-9750

www.beachumroeser.com

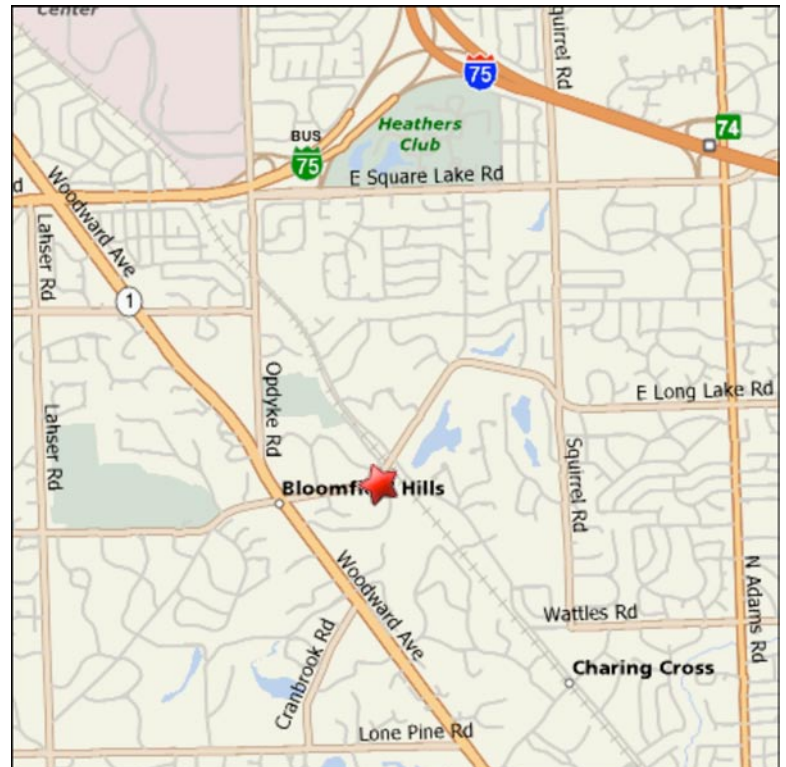
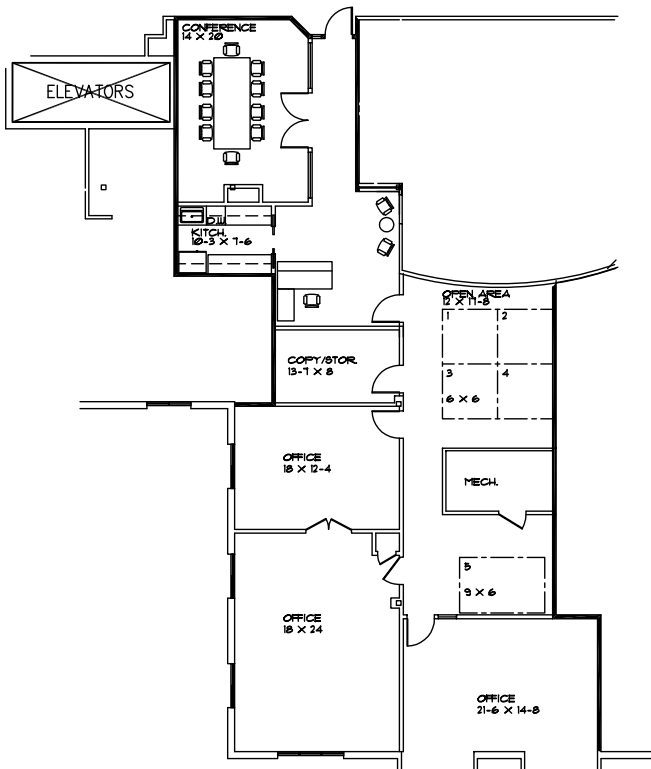
## Office Space For Lease

### Governor's Place Executive Offices

33 Bloomfield Hills Parkway, Suite 290  
Bloomfield Hills, MI 48304

#### 2,800 Rentable Square Feet

- Classic Williamsburg architectural design
- Easy access to the Detroit Metropolitan freeway
- Beautifully landscaped
- Operative windows that provide fresh air
- Convenient and ample parking
- Customer oriented building owners and managers
- Located in the heart of prestigious Bloomfield Hills
- Close to Bloomfield Hills CC, Open Hunt Club
- Convenient to banks, hotels and gyms



## Governor's Place Executive Offices

<b>Suite Size &amp; Address:</b>	2,800 Rentable Square Feet at 33 Bloomfield Hills Parkway, Suite 290
<b>Load Factor:</b>	Twelve (12%) percent
<b>Availability:</b>	For information visit <a href="http://www.beachumroeser.com">www.beachumroeser.com</a> or call 248-647-7500
<b>Rental Rate</b> <small>(Modified Gross):</small>	\$25.00 per RSF (direct deal with Landlord. Negotiable on a Sublease)
<b>Escalation:</b>	Three (3%) percent per annum
<b>Tax &amp; Operating:</b>	Base Year
<b>Term:</b>	Five (5) year term
<b>Utilities:</b>	Gas and electric separately metered – paid by tenant
<b>Communications:</b>	DSL, T-1, Cable (Comcast)
<b>Parking Ratio:</b>	<i>General office:</i> 5 spaces per 1,000 u.s.f.

### Unique Features:

- Classic Williamsburg architectural design
- Easy access to the Detroit Metropolitan freeway system
- Beautiful landscaping
- Operative windows that provide fresh air
- Convenient and ample parking
- Customer oriented building owners and managers

### Quick Demographics - Oakland County, MI:

- Population (2005): 1,214,361
- Median household income (2005): \$64,022
- Median house value (2005): \$245,269
- Bloomfield Township median household income (2005): \$103,300
- Bloomfield Township median house/condo value in 2005: \$463,200

<b>Contact:</b>	<b>Michelle A. Riley</b>
Phone:	248-647-7500
Cell:	248-496-6504
Fax:	248-665-0006
E-Mail:	<a href="mailto:mriley@beachumroeser.com">mriley@beachumroeser.com</a>