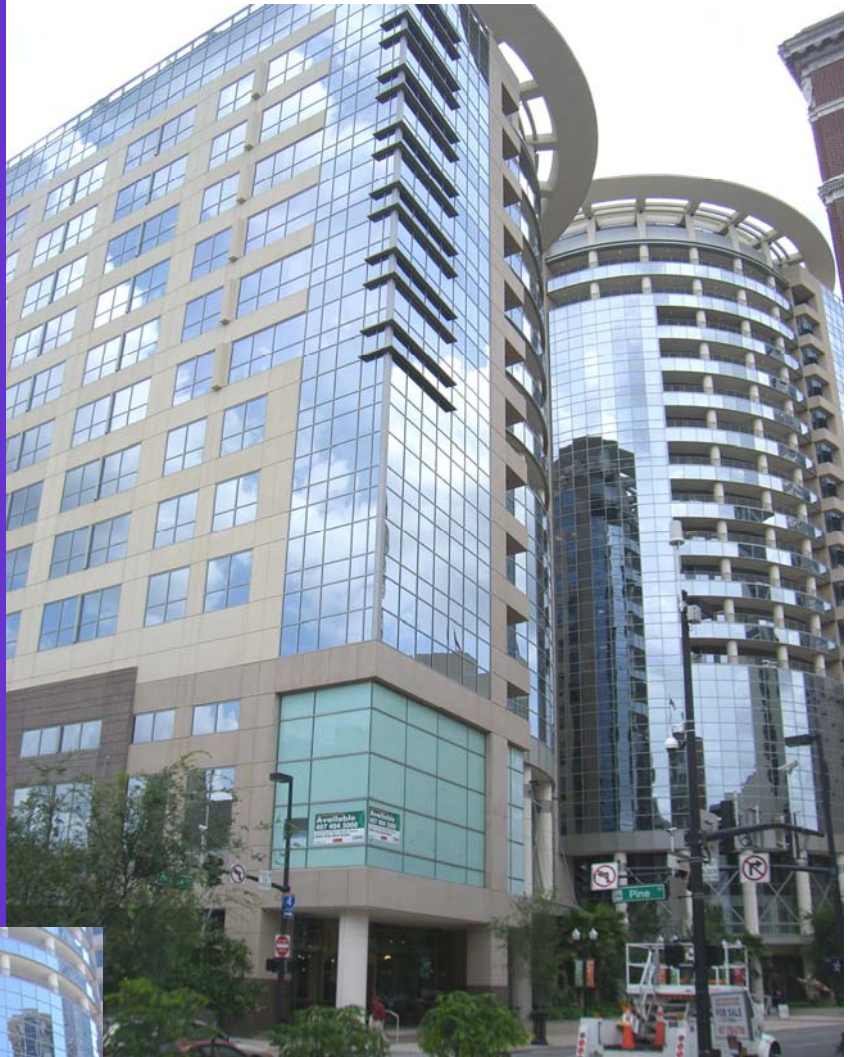


For Sale

121 S. Orange Avenue
Downtown Orlando, Florida

Class A
Downtown Office Condo



Property Summary

Location:

The Plaza
121 South Orange Avenue
Downtown Orlando, FL

Building Type:

Mixed Use Office Condominium
Class A 16 & 21 Story Towers

Unit Location:

1430, North Tower

Size: Subdivided into two office spaces

B- 2,101 SF (Leased)

A- 1,203 SF (Leased, month to month)

Total- 3,304 SSF

Price:

\$195/SSF

\$644,280

Amenities:

Six offices, conference room, break area,
and open work area

Covered parking available

Spectacular views of Lake Eola and
Downtown Orlando

Restaurants & shops below

High bandwidth telecommunications

24 Hour On site security

Plaza Cinema Café now open!



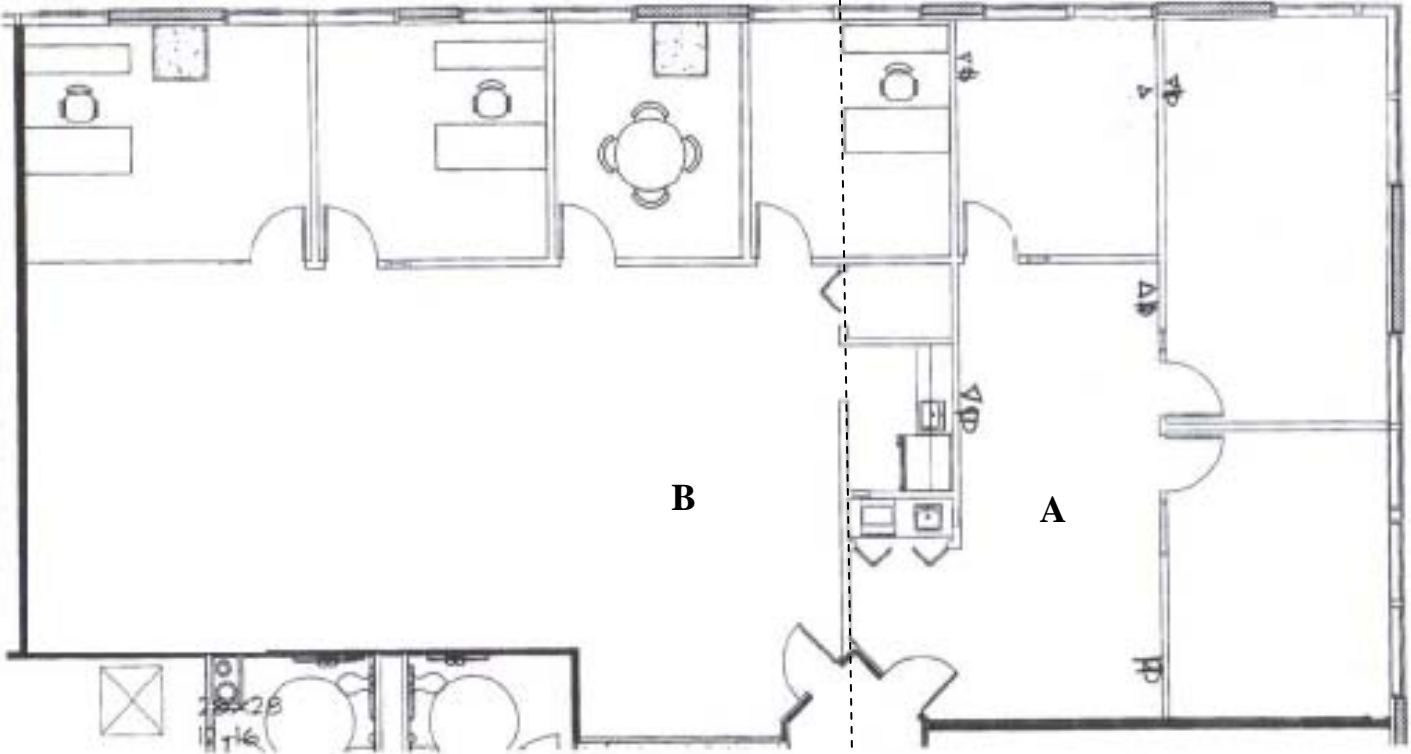
Marc Cook, CFP® - mc@tomcookcommercial.com
Tom Cook, CPM, SIOR - tc@tomcookcommercial.com
(407) 849-0102

TomCook
Commercial

Licensed Real Estate Broker

No warranty or representation, expressed or implied, is made as to the accuracy of the information contained herein and same is submitted subject to errors, omissions, change of price, rental or other conditions, withdrawal without notice, and to any special listing conditions imposed by other principals.

1430 North Floor Plan



Suite B



Suite A

No warranty or representation, expressed or implied, is made as to the accuracy of the information contained herein and same is submitted subject to errors, omissions, change of price, rental or other conditions, withdrawal without notice, and to any special listing conditions imposed by other principals.