

STORM DRAIN PIPE SCHEDULE

PAID - LINEAR FEET OF - AT -

1  
PIPE  
TOP  
THREAT  
INV. IN  
INV. OUT

2  
PIPE  
TOP  
THREAT  
INV. IN  
INV. OUT

3  
PIPE  
TOP  
THREAT  
INV. IN  
INV. OUT

4  
PIPE  
TOP  
THREAT  
INV. IN  
INV. OUT

STORM DRAIN PIPE SCHEDULE

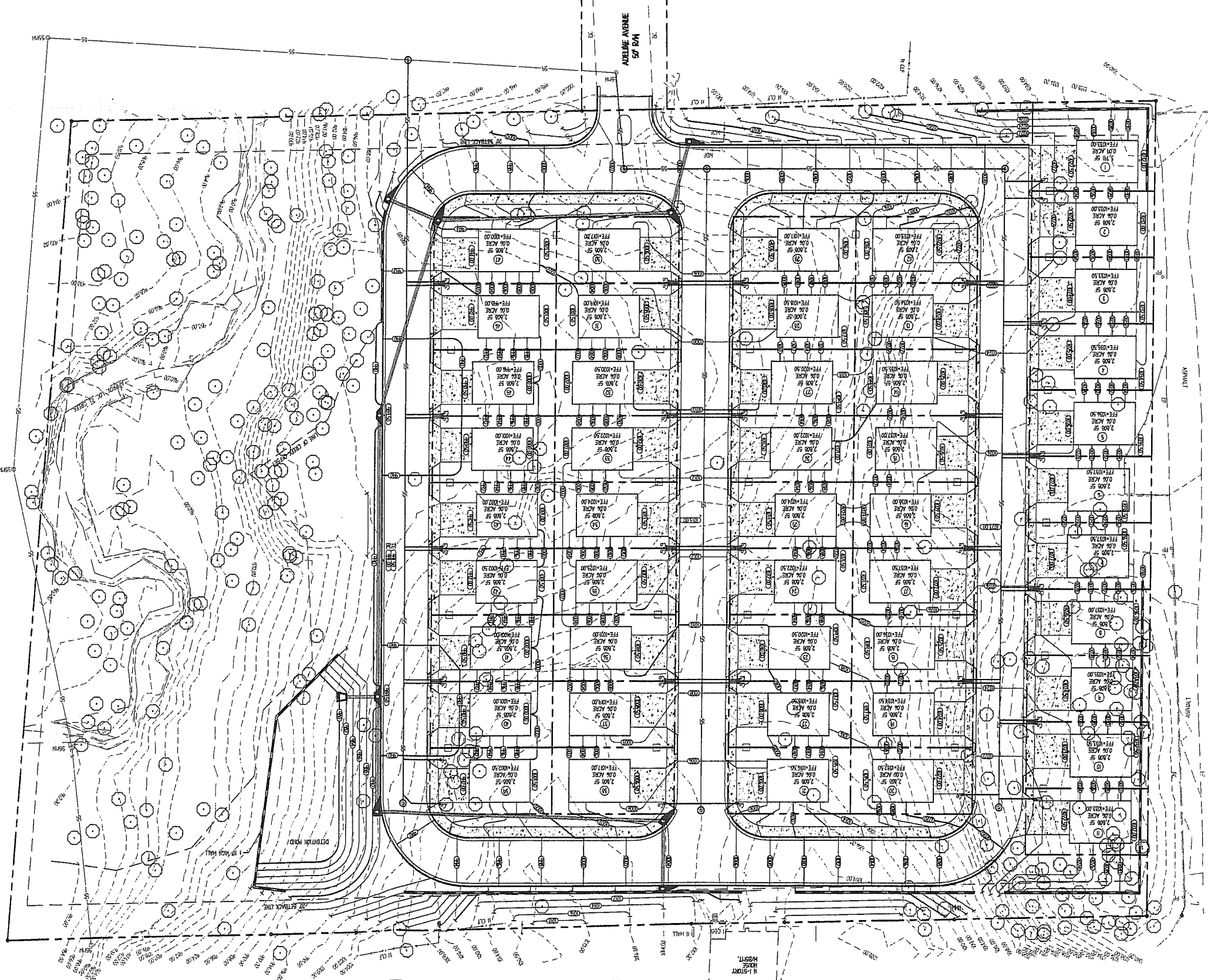
1  
PIPE  
TOP  
THREAT  
INV. IN  
INV. OUT

2  
PIPE  
TOP  
THREAT  
INV. IN  
INV. OUT

SANITARY SEWER SCHEDULE

1  
PIPE  
TOP  
THREAT  
INV. IN  
INV. OUT

2  
PIPE  
TOP  
THREAT  
INV. IN  
INV. OUT

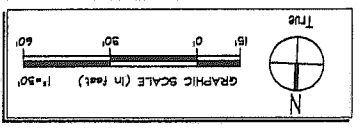


CITY OF ATLANTA NOTES

1. SEE LANDSCAPE PLAN FOR REQUIRED TREES AND GRASS COVER.
2. GRADE OF SURFACE GRADE SHALL BE A MINIMUM OF 10%.
3. THE CONTRACTOR SHALL PROVIDE CLEAN, SATURATED MATERIAL FOR REQUIRED FILL. SHOULD A SURVEYOR QUANTITY OF SATURATED MATERIAL BE REQUIRED, THE CONTRACTOR SHALL PROVIDE CLEAN, SATURATED MATERIAL FROM A QUALIFIED SOURCE.
4. ALL FILL MATERIAL SHALL BE FREE OF ROCKS OR OTHER OBSTRUCTIONS AVAILABLE FROM THE REQUIRED EXCAVATION OF THE SITE.
5. ALL FILL MATERIAL SHALL BE PLACED TO 5% OF THE MAXIMUM STANDARD PROCTOR DENSITY (ASTM D-1557) UNLESS OTHERWISE INDICATED ON THE PLANS. THE CONTACTED FILL MATERIALS, COMPACTED WITH THE REQUIRED PROCTOR DENSITY SHALL BE PLACED TO 5% OF THE MAXIMUM STANDARD PROCTOR DENSITY (ASTM D-1557) UNLESS OTHERWISE INDICATED ON THE PLANS. THE CONTACTED FILL MATERIALS, COMPACTED WITH THE REQUIRED PROCTOR DENSITY SHALL BE PLACED TO 5% OF THE MAXIMUM STANDARD PROCTOR DENSITY (ASTM D-1557) UNLESS OTHERWISE INDICATED ON THE PLANS. THE CONTACTED FILL MATERIALS, COMPACTED WITH THE REQUIRED PROCTOR DENSITY SHALL BE PLACED TO 5% OF THE MAXIMUM STANDARD PROCTOR DENSITY (ASTM D-1557) UNLESS OTHERWISE INDICATED ON THE PLANS.
6. DETENTION POND, DETENTION OUTLET STRUCTURES AND TYPICAL SECTIONS, PAVEMENT, CURBS, SIDEWALKS OR FOOTINGS OF ANY TYPE.
7. PERMANENT GROUND COVER IS ESTABLISHED.
8. LENGTH OF ROOF RAMP PANS AT PRE-CAST STRUCTURES TO AGE TO BE A MINIMUM OF 18 INCHES.
9. MINIMUM LENGTH OF (A) SIX FEET THE DIAPHRAGM OF THE PIPE IN SET.
10. UNDESIRABLE LAND DEVELOPMENT SHALL BE DELETED ON SITE AT CONTRACTOR TO PROVIDE POSITIVE DRAINAGE AWAY FROM BUILDING IN ALL AREAS AROUND BUILDING. A FRENCH DRAIN SYSTEM MAY BE INSTALLED IN UNOCCUPIED AREAS ADJACENT TO BUILDING.

GRADING & DRAINAGE NOTES

1. SEE LANDSCAPE PLAN FOR REQUIRED TREES AND GRASS COVER.
2. GRADE OF SURFACE GRADE SHALL BE A MINIMUM OF 10%.
3. THE CONTRACTOR SHALL PROVIDE CLEAN, SATURATED MATERIAL FOR REQUIRED FILL. SHOULD A SURVEYOR QUANTITY OF SATURATED MATERIAL BE REQUIRED, THE CONTRACTOR SHALL PROVIDE CLEAN, SATURATED MATERIAL FROM A QUALIFIED SOURCE.
4. ALL FILL MATERIAL SHALL BE PLACED TO 5% OF THE MAXIMUM STANDARD PROCTOR DENSITY (ASTM D-1557) UNLESS OTHERWISE INDICATED ON THE PLANS. THE CONTACTED FILL MATERIALS, COMPACTED WITH THE REQUIRED PROCTOR DENSITY SHALL BE PLACED TO 5% OF THE MAXIMUM STANDARD PROCTOR DENSITY (ASTM D-1557) UNLESS OTHERWISE INDICATED ON THE PLANS. THE CONTACTED FILL MATERIALS, COMPACTED WITH THE REQUIRED PROCTOR DENSITY SHALL BE PLACED TO 5% OF THE MAXIMUM STANDARD PROCTOR DENSITY (ASTM D-1557) UNLESS OTHERWISE INDICATED ON THE PLANS.
5. ALL FILL MATERIAL SHALL BE PLACED TO 5% OF THE MAXIMUM STANDARD PROCTOR DENSITY (ASTM D-1557) UNLESS OTHERWISE INDICATED ON THE PLANS. THE CONTACTED FILL MATERIALS, COMPACTED WITH THE REQUIRED PROCTOR DENSITY SHALL BE PLACED TO 5% OF THE MAXIMUM STANDARD PROCTOR DENSITY (ASTM D-1557) UNLESS OTHERWISE INDICATED ON THE PLANS.
6. DETENTION POND, DETENTION OUTLET STRUCTURES AND TYPICAL SECTIONS, PAVEMENT, CURBS, SIDEWALKS OR FOOTINGS OF ANY TYPE.
7. PERMANENT GROUND COVER IS ESTABLISHED.
8. LENGTH OF ROOF RAMP PANS AT PRE-CAST STRUCTURES TO AGE TO BE A MINIMUM OF 18 INCHES.
9. MINIMUM LENGTH OF (A) SIX FEET THE DIAPHRAGM OF THE PIPE IN SET.
10. UNDESIRABLE LAND DEVELOPMENT SHALL BE DELETED ON SITE AT CONTRACTOR TO PROVIDE POSITIVE DRAINAGE AWAY FROM BUILDING IN ALL AREAS AROUND BUILDING. A FRENCH DRAIN SYSTEM MAY BE INSTALLED IN UNOCCUPIED AREAS ADJACENT TO BUILDING.



ADELINE AVENUE

Richard A. Noff

PIMSLER - HOSS ARCHITECTS INC

PROJECT N

|                 |
|-----------------|
| SCALE: 1" = 50' |
| REV. D          |
| 07.1.00         |

NOT RELEASED FOR CONSTRUCTION