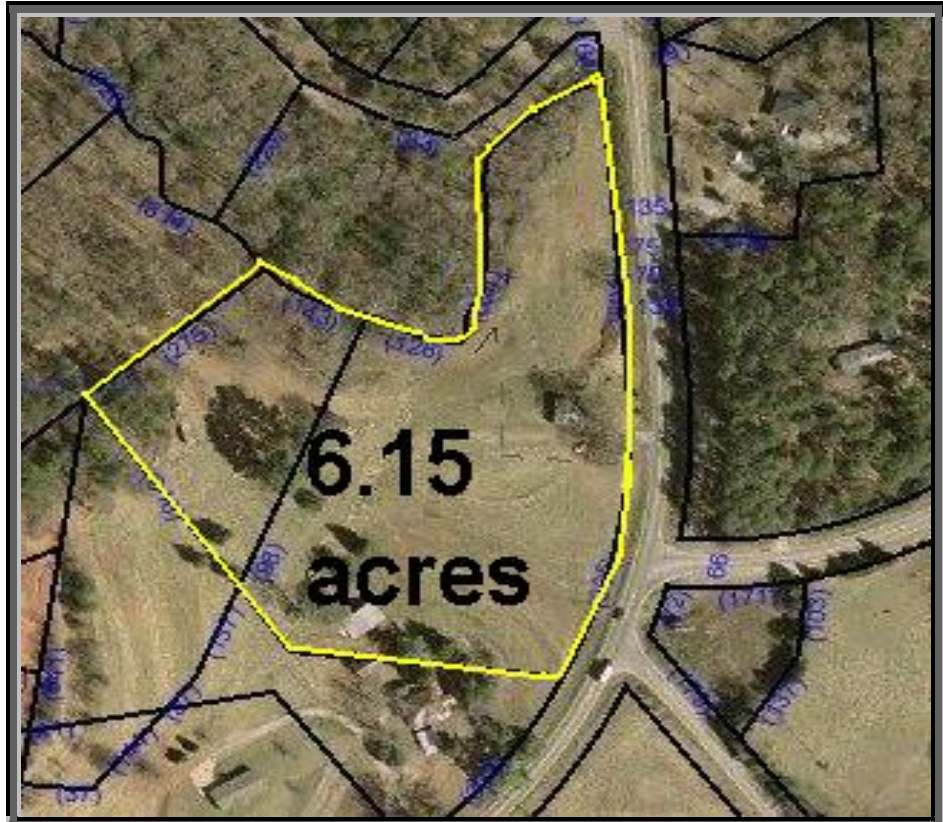


# PRICE REDUCED!

*Dacusville Hwy (Hwy 135) • Easley, SC*



***\$170,000***

- 6.15 acres with 829 front feet on Dacusville Hwy
- 6/10 mile from Palmetto Baptist Hospital
- Commercial or Residential Development Potential

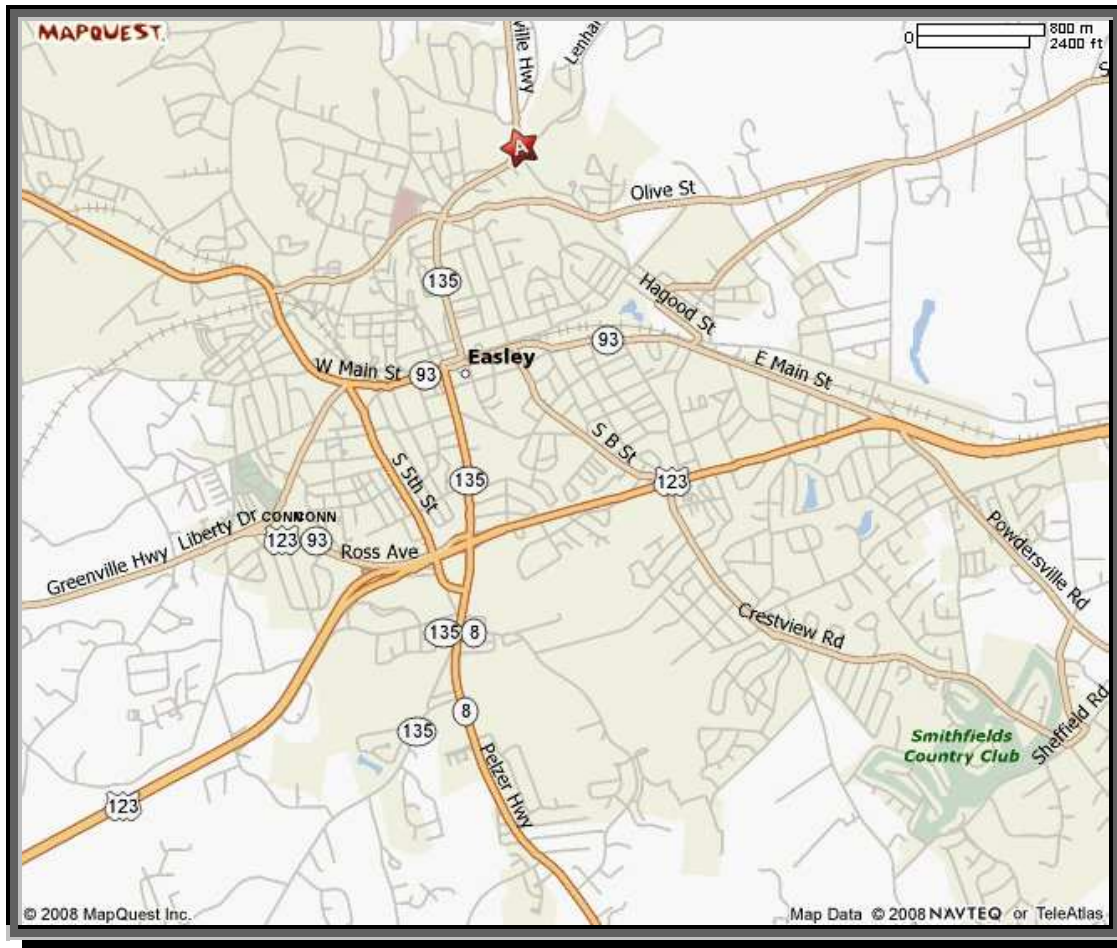
***Owner Financing Available***

**CHUCK YEAGER  
REAL ESTATE**  
[www.cyrealestate.com](http://www.cyrealestate.com)

**Chuck Yeager - Broker in Charge**  
223B Siloam Road • Easley, SC 29642  
Office: (864) 295-1313  
Fax: (864) 295-1316  
Mobile: (864) 901-4242  
[chuckyeager@bellsouth.net](mailto:chuckyeager@bellsouth.net)

Although every effort has been made to ensure accuracy, no liability is assumed for errors or omissions.  
Terms, pricing or availability are subject to change without notice.

# PRICE REDUCED!



Easley is located in the Northwest corner of SC, between Atlanta, GA and Charlotte, NC. U.S. Hwy 123 runs through Easley and connects Greenville to the east and Clemson to the west. Interstate 85 is 15 miles south of Easley. Asheville NC is approximately 80 miles north, and Columbia SC is 100 miles south.

**CHUCK YEAGER**  
**REAL ESTATE**  
[www.cyrealestate.com](http://www.cyrealestate.com)

**Chuck Yeager - Broker in Charge**

223B Siloam Road • Easley, SC 29642

Office: (864) 295-1313

Fax: (864) 295-1316

Mobile: (864) 901-4242

[chuckyeager@bellsouth.net](mailto:chuckyeager@bellsouth.net)

Although every effort has been made to ensure accuracy, no liability is assumed for errors or omissions.  
Terms, pricing or availability are subject to change without notice.