

New Bedford, MA - Former Shaw's

1331 Cove Road, New Bedford, MA 02744

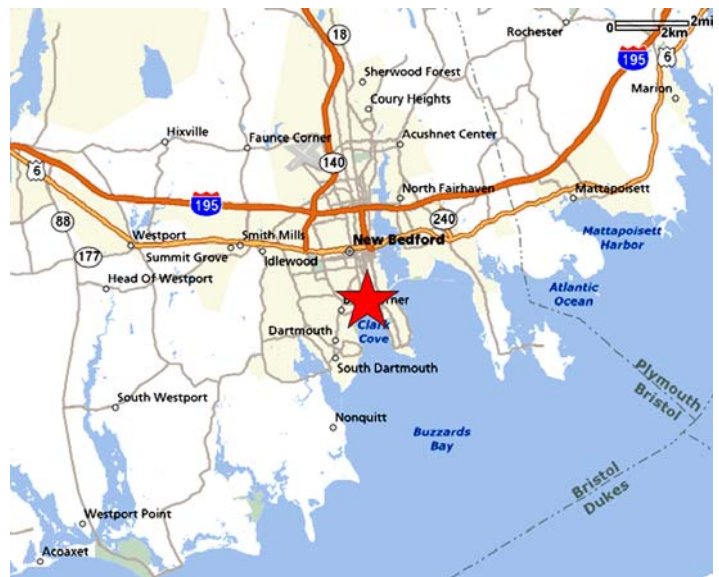


FOR SUB-LEASE: 64,090 SF

This retail center is located in New Bedford's waterfront trade area. It is strategically placed approximately 1 mile from the New Bedford's downtown and 3 miles from Route 6 trade area.

Co-tenants include Blockbuster Video, Delkin Dry Cleaner, Brooks Pharmacy and Burger King. Area co-tenants include Price Rite, Super Stop and Shop, CVS, RAC and Seabra Supermarket.

This location serves at the primary daily needs, center for south New Bedford population.



**National
Commercial
Brokers, Inc.**

Retail and Commercial Real Estate Services

Phone: 781-453-0360 Fax: 781-453-0390

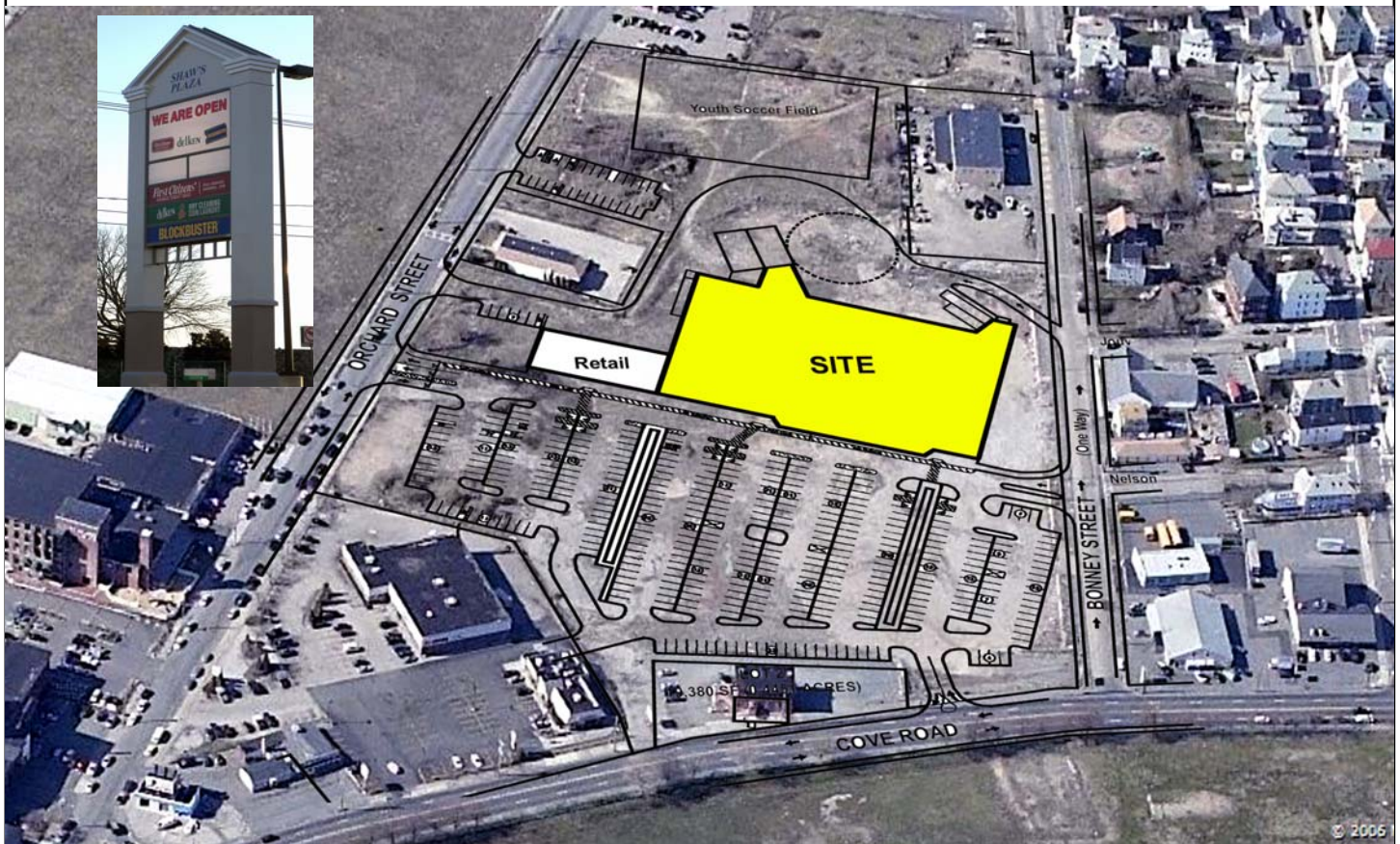
75 Second Avenue, Suite 315
Needham, MA 02494

www.nationalcommercial.com

The information that is provided above is from sources that are deemed to be reliable and is subject to error, omission, change in price or withdrawal from the market without any prior notice.

New Bedford, MA - Former Shaw's

1331 Cove Road, New Bedford, MA 02744



Available Space Profile

Total Project Size	71,547 SF
Space Available	64,090
Parking	600 owned spaces
Traffic count	16,200 cars per day
Availability	Immediate

Trade Area

Radius	Population	Med. HH Inc.
1 mile	22,823	\$27,075
3 mile	80,943	\$32,285
5 mile	123,696	\$33,371

For more information:

Brian Nadler
National Commercial Brokers
75 Second Avenue, Suite 315
Needham, MA 02494

Phone: 781-453-0360
Fax: 781-453-0390
www.nationalcommercial.com
brian@nationalcommercial.com

**National
Commercial
Brokers, Inc.**

Retail and Commercial Real Estate Services

75 Second Avenue, Suite 315
Needham, MA 02494

Phone: 781-453-0360 Fax: 781-453-0390

www.nationalcommercial.com

The information that is provided above is from sources that are deemed to be reliable and is subject to error, omission, change in price or withdrawal from the market without any prior notice.