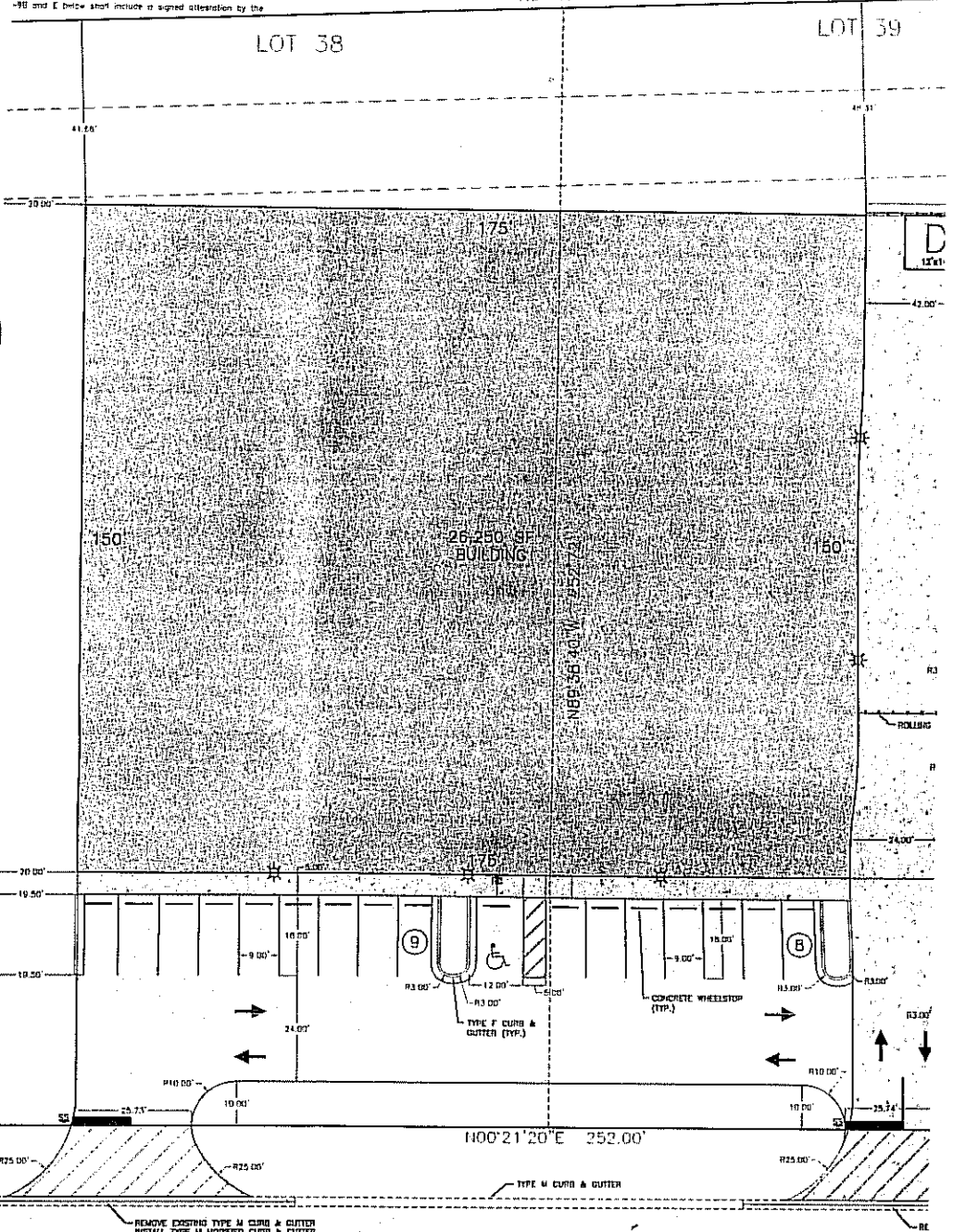


moved and the number, type and location of trees to be  
 removed and the number, type and location of trees to be  
 saved the location of trees proposed for removal  
 and a statement as to how such trees are to be protected.  
 of field inspection.  
 -PB and E below shall include a signed attestation by the

N01°49'17"W 252.18'



COMMERCE PARKWAY

TYPE M CURB