

224 13th Avenue

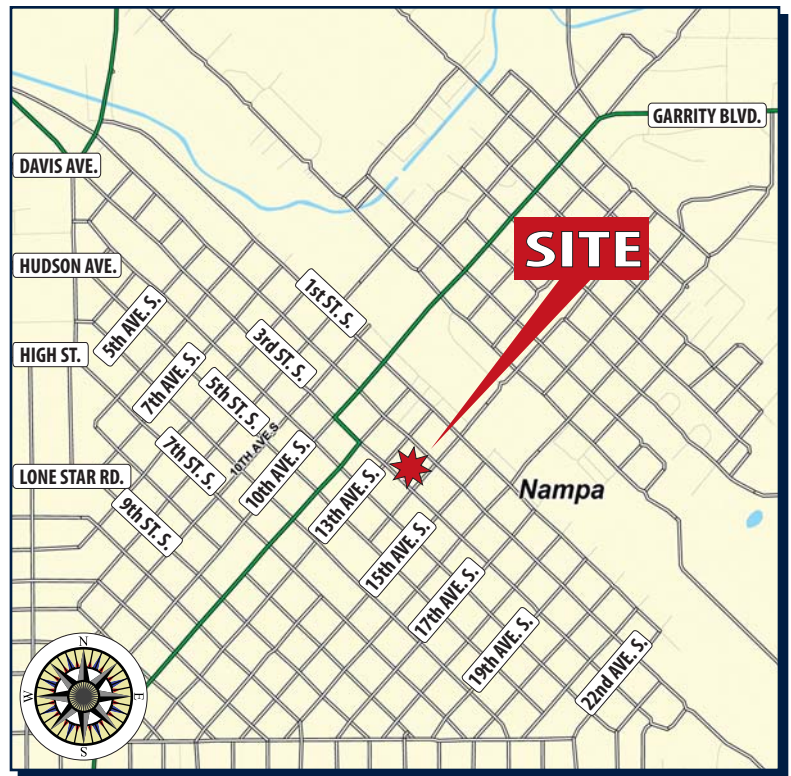
Nampa | Idaho



Corner property on main entrance into downtown Nampa. Great opportunity to construct a new multi-story development in the Historic District of Downtown Nampa.

PROPERTY PROFILE

- Corner parcel with great visibility into the heart of Historic Downtown
- Development opportunity provides for single user or multi-story, multi-tenant mixed-use
- 7,000 SF parcel
- Property owned by an Idaho licensed real estate agent
- Sale Price: ~~\$85,000 (\$12.14 PSF)~~
\$65,000 (\$9.28 PSF)



FOR MORE INFORMATION:

JEFF NEEDS
208-409-8565
jeff.needs@colliersidaho.net