

US 20/SMILAX LAND, NEW CARLISLE

INDUSTRIAL LAND FOR SALE

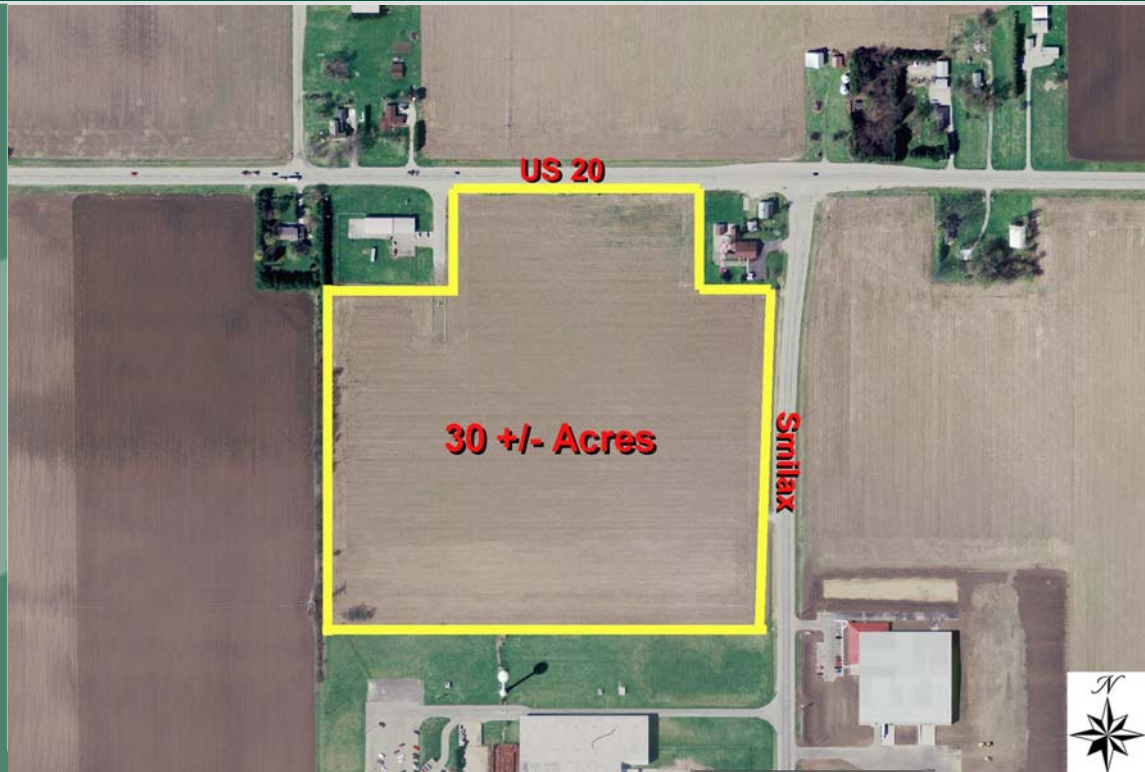
This property consists of approximately 30 acres of land, near the IN Tek Plant, on Smilax Rd.

For more information, contact:

John O'Brien, CCIM
T 574.243.5017
F 574.271.9092
john.obrien@cbre.com

CB Richard Ellis | Bradley
527 Park Place Court
Edison Lakes Corporate Park
Mishawaka, IN 46545
T 574.273.1900
F 574.271.9092

www.cbre.com/southbend



This property is zoned M-Manufacturing and has water nearby at the IN Tek Plant, sewer on Smilax Rd., and can be served by rail. The site is located on US 20 about 5 miles west of the US 31 Bypass, the Michiana Regional Transportation Center, and the Indiana 80/90 Toll Rd.

- 30 Acres
- Zoned M – Manufacturing
- Sewer on Smilax Rd.
- Water near Site
- Can be Served by Rail
- Close to US 31 Bypass and Indiana 80/90 Toll Rd.
- **For Sale: \$570,000**
(\$19,000 per acre)

©2007, CB Richard Ellis, Inc. We obtained the information above from sources we believe to be reliable. However, we have not verified its accuracy and make no guarantee, warranty or representation about it. It is submitted subject to the possibility of errors, omissions, change of price, rental or other conditions, prior sale, lease or financing, or withdrawal without notice. We include projections, opinions, assumptions or estimates for example only, and they may not represent current or future performance of the property. You and your tax and legal advisors should conduct your own investigation of the property and transaction.

CBRE | Bradley
CB RICHARD ELLIS