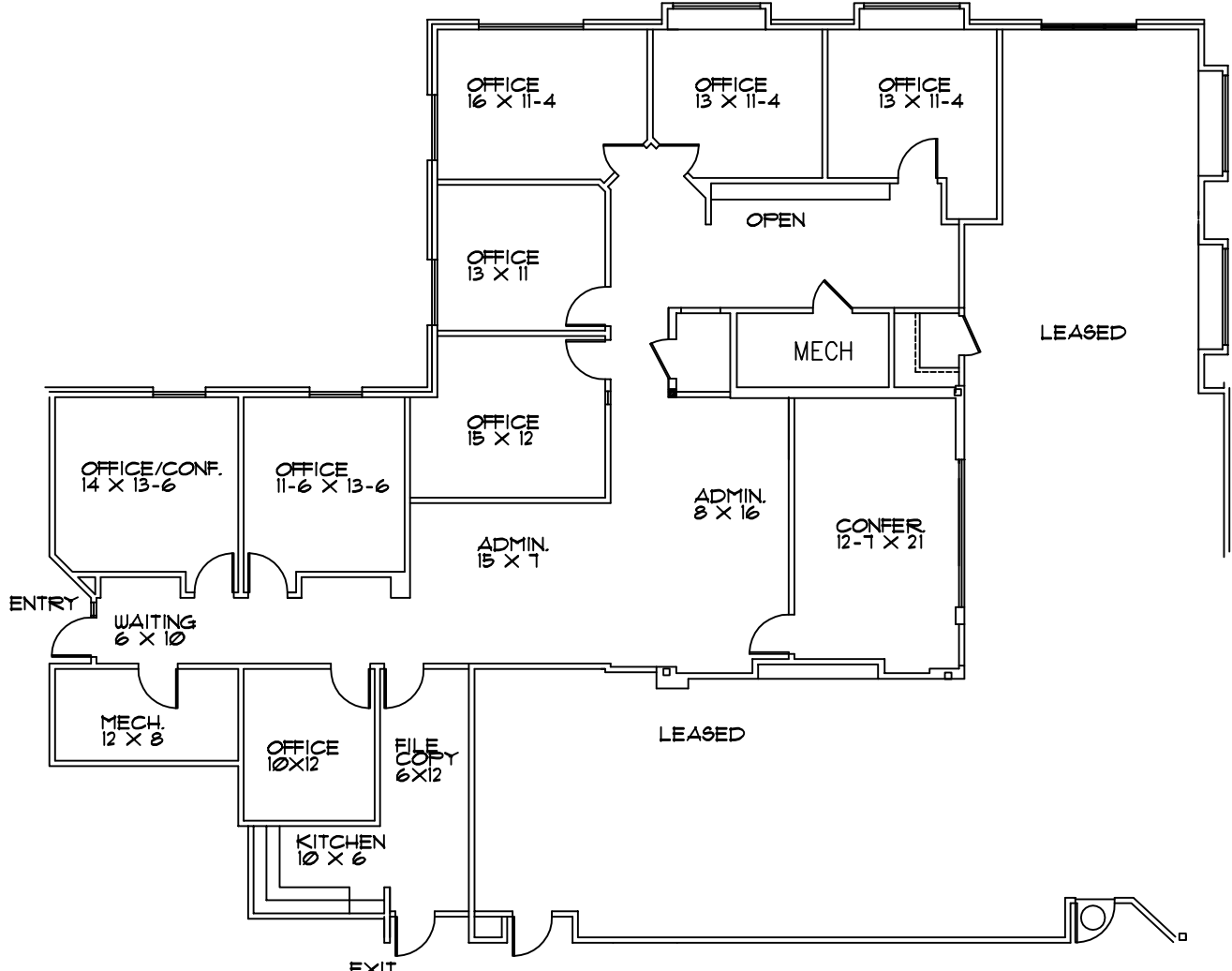


GOVERNORS PLACE

33 BLOOMFIELD HILLS PARKWAY
 BLOOMFIELD HILLS, MI.
 SUITE 155
 AVAILABLE FOR LEASE
 APPROX. 3,435 R.S.F.



PARTIAL FIRST FLOOR PLAN



DEVELOPMENT & MANAGEMENT CORPORATION

CALL:
 MICHELLE RILEY
 248-647-7500