

LAND FOR SALE

Hwy 123/Calhoun Mem. Hwy Easley, SC 29640



PRICE REDUCED

\$710,000

- Approximately 1 Acre
- Traffic Count: 35,800 VPD
- 153' of Road Frontage
- 15 Minutes to Downtown Greenville
- Great Retail Site
- One of the Last Available Parcels in this Busy Commercial District

**CHUCK YEAGER
REAL ESTATE**

www.cyrealestate.com

Chuck Yeager
Broker in Charge

223B Siloam Road
Easley, SC 29642

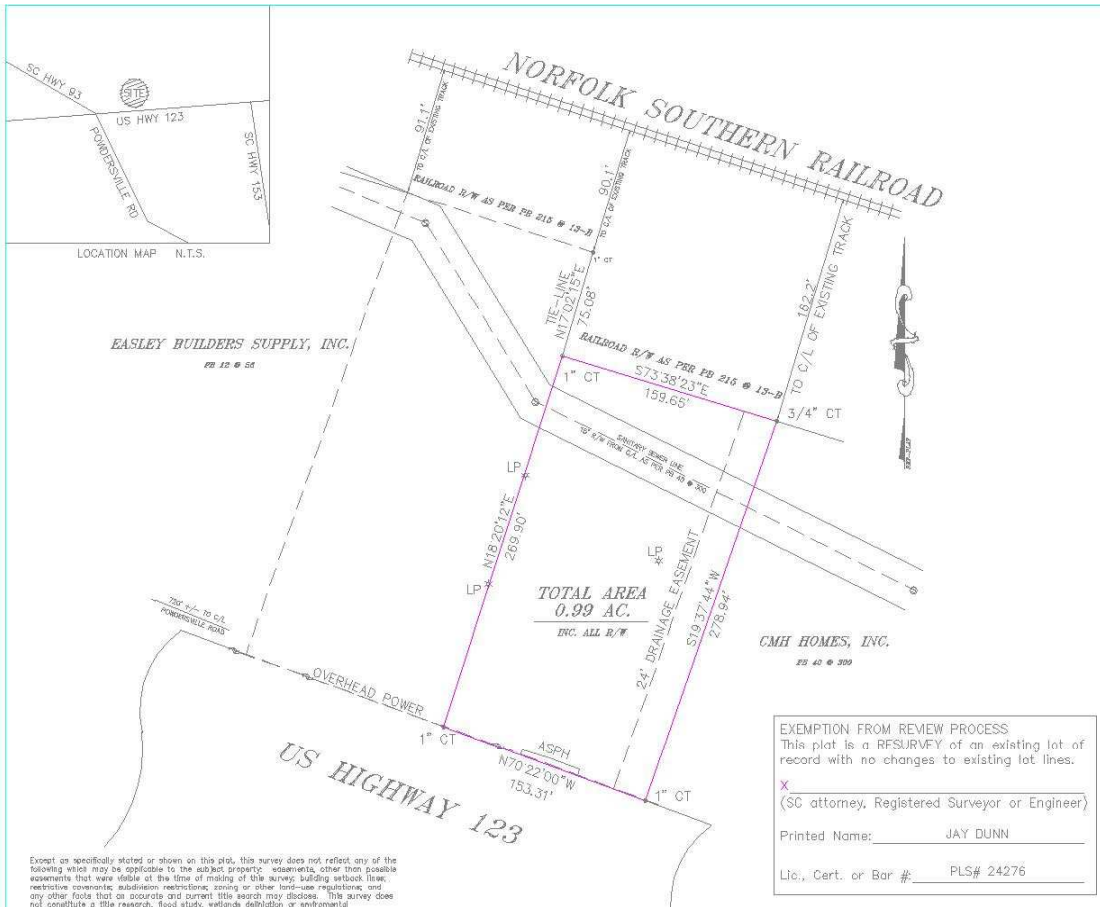
Office: (864) 295-1313

Fax: (864) 295-1316

Mobile: (864) 901-4242

chuckyeager@bellsouth.net

Although every effort has been made to ensure accuracy, no liability is assumed for errors or omissions.
Terms, pricing or availability are subject to change without notice.

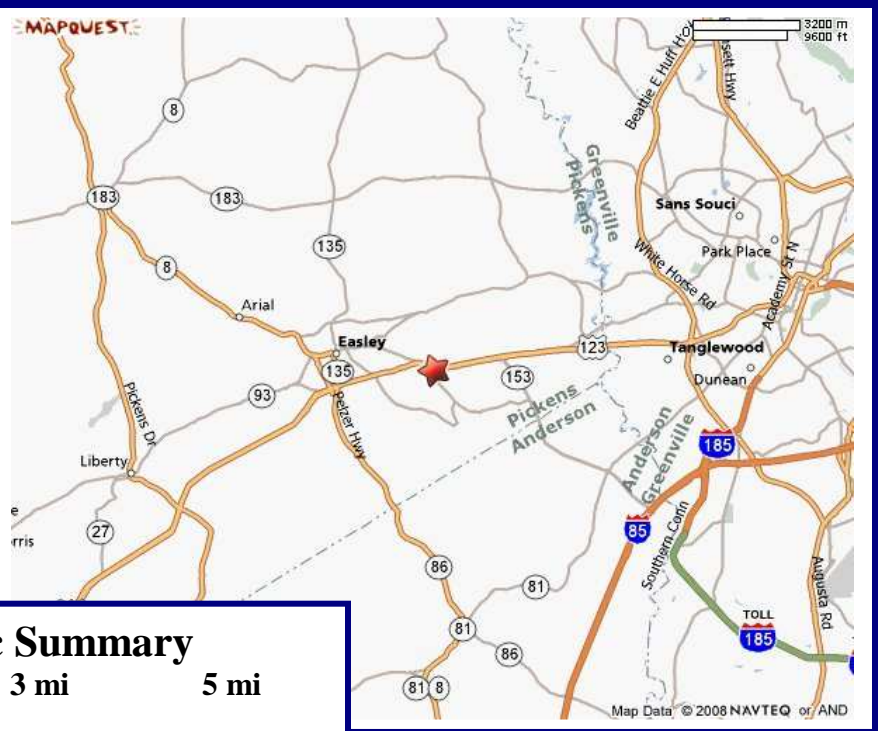


JAY DUNN Land

Professional Land Survey
Post Office Box
1649 E. Main St
Easley, South Carolina
Office (864) 859-
Fax (864) 306-

I hereby state that to the best of my knowledge and belief, this survey was made in accordance with the Minimum Standards Manual for the Practice of Surveying in South Carolina and meets or exceeds the requirements specified therein.

Bobby Jay Dunn, P.L.S. No. 24276



2006 Demographic Summary

	1 mi	3 mi	5 mi
Total Population	1,056	16,060	61,142
Median Income	47,192	48,509	38,727