

OFFICE SPACE FOR LEASE

Continental Plaza

4619 Emerald, between Orchard | Boise
and Garden Streets



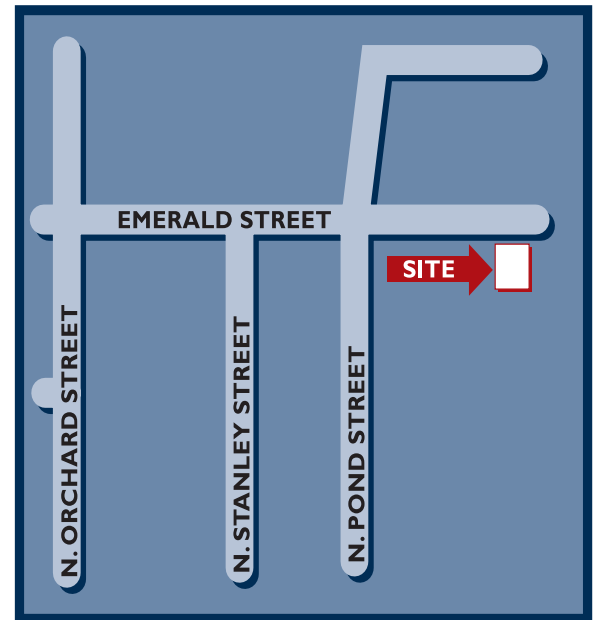
SPACE AVAILABLE

• **Suite A-2** - 3,082 total square feet available, including 1,257 square foot finished basement

Blended Lease Rate: \$8.90 PSF, FSEJ

• **Suite D-2*** - 1,585 square feet available

Lease Rate: \$9.90 PSF, FSEJ



PROPERTY PROFILE

- Ideal for mortgage, law or accounting offices
- Convenient to Downtown
- Free parking

FOR MORE INFORMATION:

LEW MANGLOS, CCIM
208-472-2841
lew.manglos@colliers.com

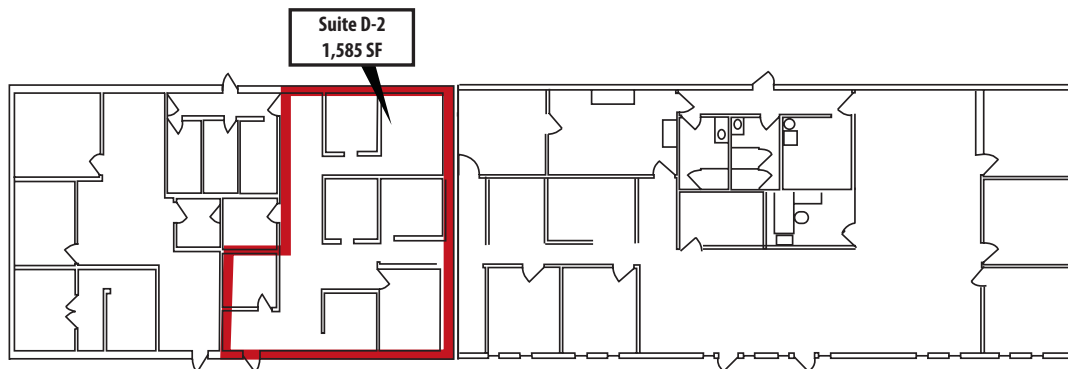
SCOTT FEIGNER
208-493-5107
scott.feighner@colliers.com

OFFICE SPACE FOR LEASE

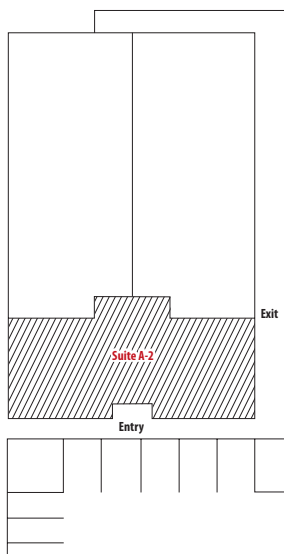
Continental Plaza

4619 Emerald, between Orchard and Garden Streets | Boise

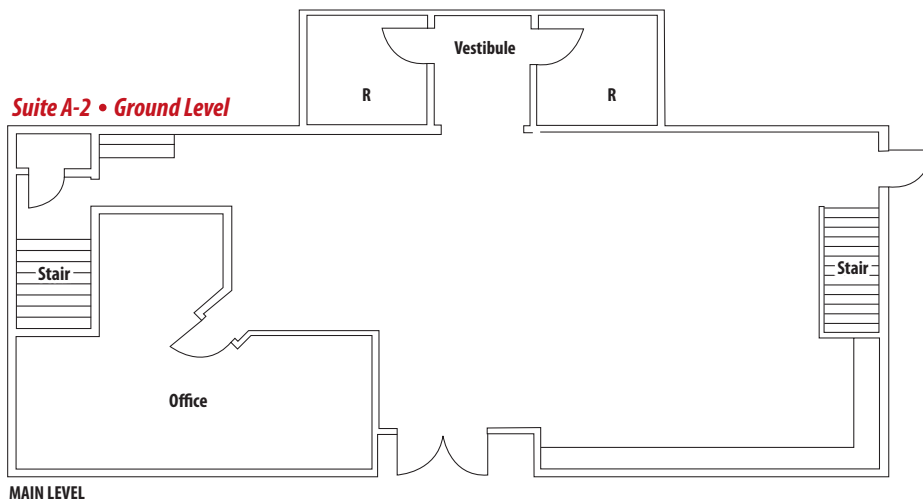
BUILDING D



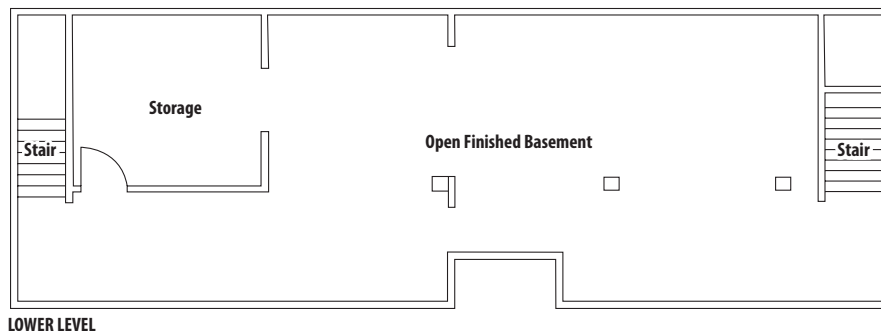
BUILDING A



Suite A-2 • Ground Level



Suite A-2 • Finished Basement



LEW MANGLOS, CCIM
208-472-2841
lew.manglos@colliers.com

SCOTT FEIGNER
208-493-5107
scott.feigner@colliers.com

BOISE
755 W. Front St., Suite 300
Boise, Idaho 83702
208.345.9000

NAMPA
5660 E. Franklin Rd., Suite 110
Nampa, Idaho 83687
208.472.1660

COLLIERS
INTERNATIONAL