

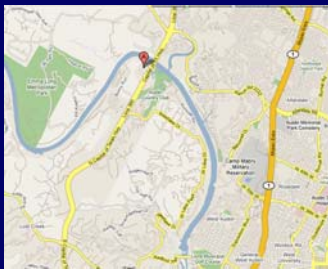
Brand New "View" Sublease



*Approx.
8,252 RSF*

*Prestige
Location*

*5001 Plaza on the Lake
Suite 302*



Contact:

Don Cox

Don Cox Company

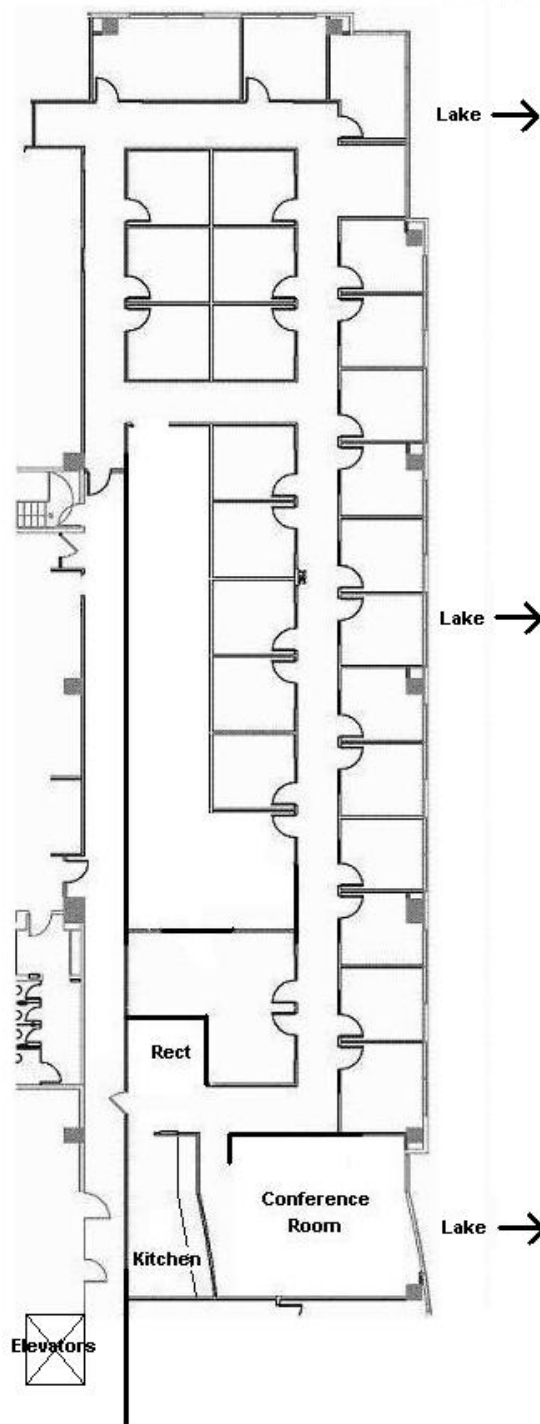
512.478.1711

don@doncox.com



- *3rd Floor - Great Views of Lake*
- *Mainly Private Office Layout*
- *Below Market Rate*
- *\$16/SF/Year + Operating Expenses*
- *Operating Expenses (2009) = \$13/SF*
- *4/1000 SF Parking*
- *75% of Parking is Covered*
- *Extra Large Conference Room*
- *Large Break Room/Kitchen*
- *Term Through Jan 31, 2011*
- *Available Soon*

5001 Plaza on the Lake, Suite 302



The information contained herein has been obtained from sources believed reliable. The Don Cox Company makes no guaranties or warranties as to the accuracy thereof. The presentation of the property is submitted to errors, omissions, change of price or terms, prior lease, or withdrawal from market without notice. Information is for guidance only and does not constitute all or any part of a contract.