

# W Butler Rd



Location: **Greenville Cluster  
Mauldin/Fountain Submarket  
Greenville County  
Greenville, SC 29607**

Type: **Land**  
Proposed Use: -  
Zoning: **C-2**  
Density: -

Developer: -  
Management: -  
Recorded Owner: -

Parcel Size: **1.79 AC**  
Lot Dimensions: -  
Improvements: -  
On-Site Improv: -

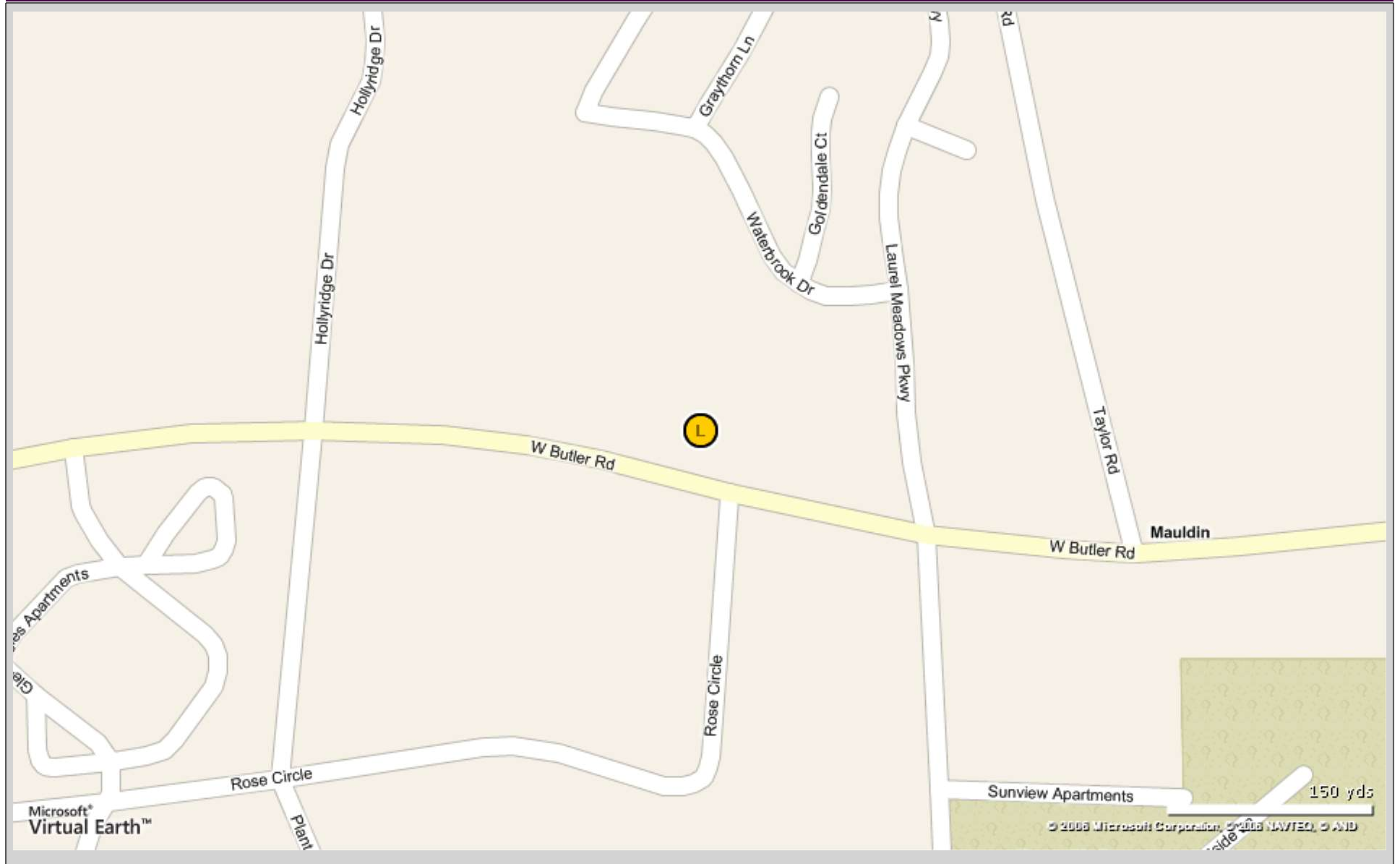
Parcel Number: **M0-008-02-01-005-08**

### Building Notes

Property is part of a planned development. Details available from listing agent.

# Aerial / Map Report

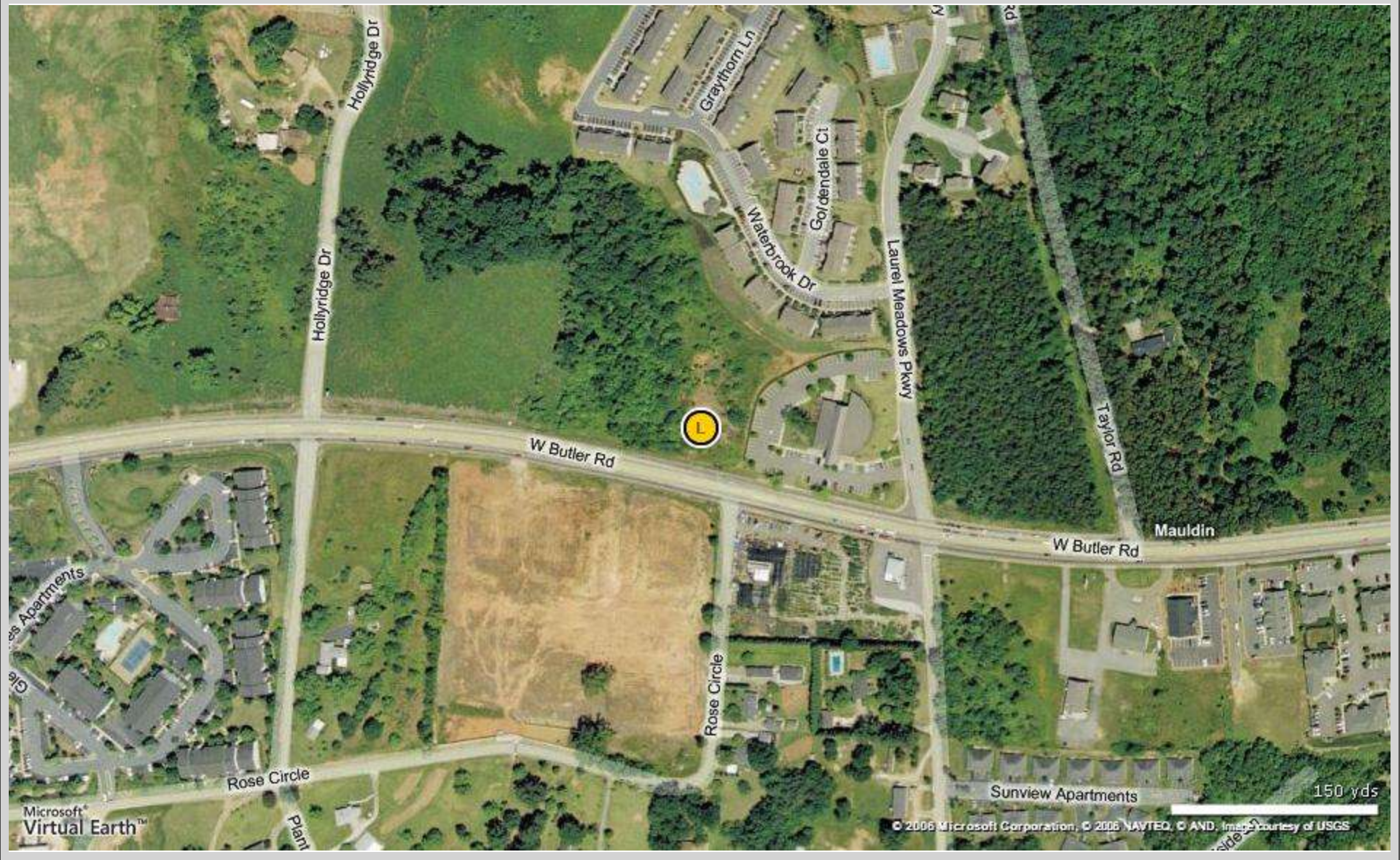
W Butler Rd - Greenville, SC 29607



Thank you for choosing Chuck Yeager Real Estate.  
This copyrighted report contains research licensed to Chuck Yeager Real Estate - 421548.

Aerial / Map Report

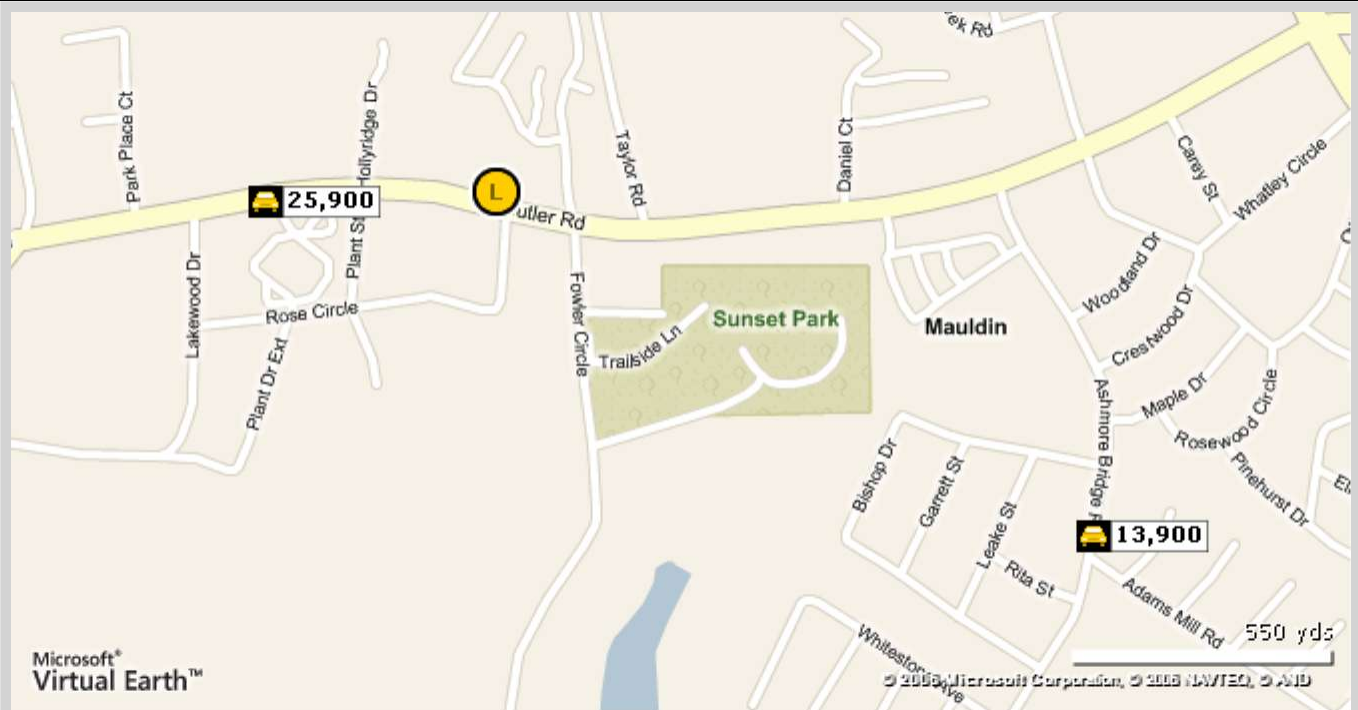
W Butler Rd - Greenville, SC 29607



# Traffic Count Report

W Butler Rd, Greenville, SC 29607

Building Type: **Land**  
 Class: -  
 RBA: -  
 Typical Floor: -  
 Total Available: **0 SF**  
 % Leased: **0%**  
 Rent/SF/Yr: -



Street	Cross Street	Cross Str Dist	Count Year	Avg Daily Volume	Volume Type	Miles from Subject Prop
<b>1</b> W Butler Rd	Lakewood Dr	0.09 W	2005	25,900	AADT	.28
<b>2</b> Ashmore Bridge Rd	Adams Mill Rd	0.03 S	2005	13,900	AADT	.84



Thank you for choosing Chuck Yeager Real Estate.  
 This copyrighted report contains research licensed to Chuck Yeager Real Estate - 421548.

# Demographic Market Comparison Report

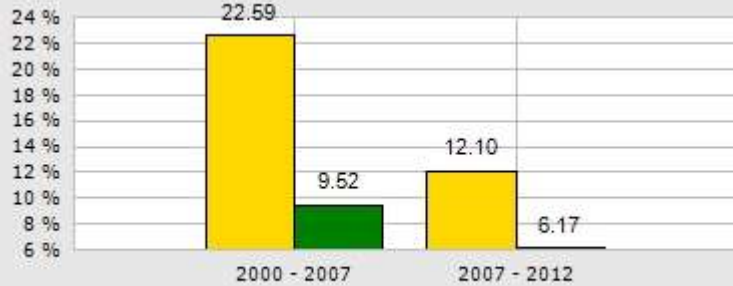
1 mile radius

W Butler Rd, Greenville, SC 29607

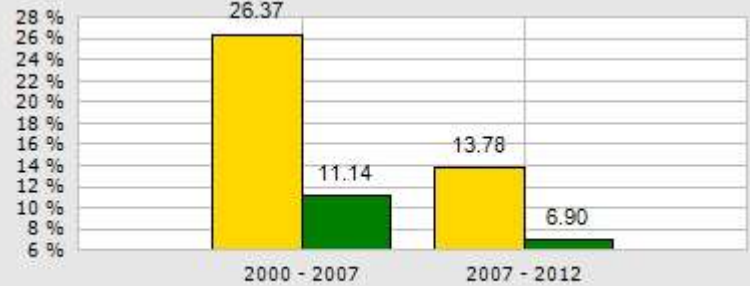
Type: **Land**  
County: **Greenville**

1 Mile  
 County

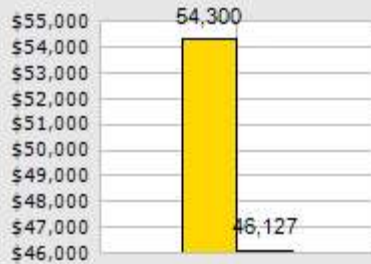
## Population Growth



## Household Growth



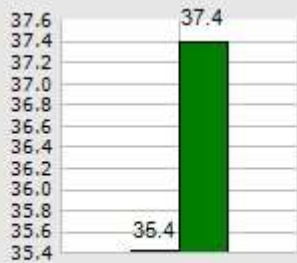
## 2007 Med Household Inc



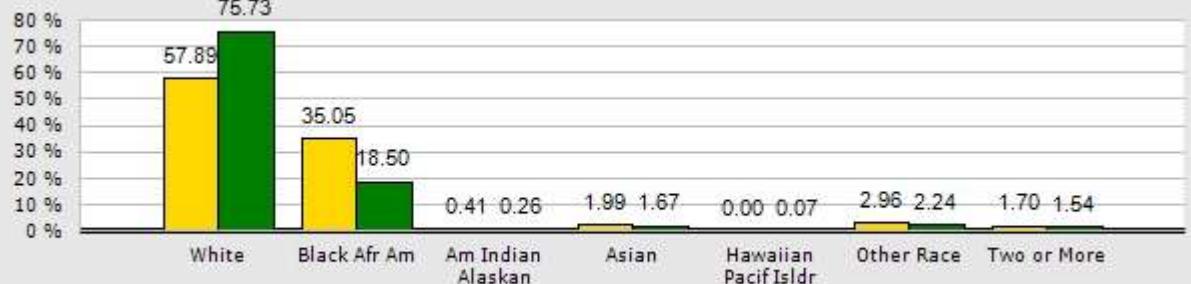
## 2007 Households by Household Income



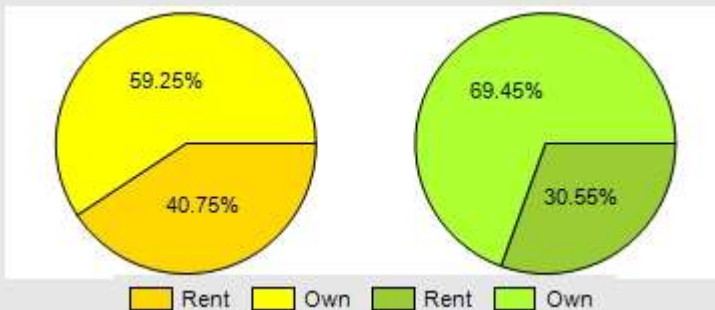
## 2007 Median Age



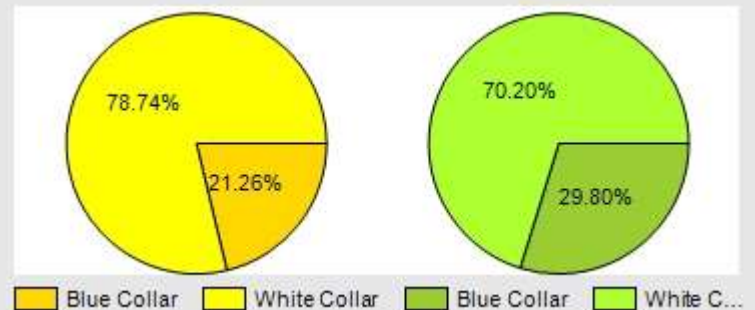
## 2007 Population by Race



## 2007 Renter vs. Owner



## 2007 Blue vs. White Collar



Thank you for choosing Chuck Yeager Real Estate.  
This copyrighted report contains research licensed to Chuck Yeager Real Estate - 421548.

# Demographic Market Comparison Report

1 mile radius

W Butler Rd, Greenville, SC 29607

Type: **Land**  
County: **Greenville**

	1 Mile		County	
<b>Population</b>				
Growth 2000 - 2007	22.59%		9.52%	
Growth 2007 - 2012	12.10%		6.17%	
2007 Blue Collar	416	21.26%	54,438	29.80%
2007 White Collar	1,541	78.74%	128,270	70.20%
<b>2007 Population By Race</b>				
	<b>4,123</b>		<b>415,764</b>	
White	2,387	57.89%	314,869	75.73%
Black Afr Am	1,445	35.05%	76,919	18.50%
Am Indian Alaskan	17	0.41%	1,068	0.26%
Asian	82	1.99%	6,927	1.67%
Hawaiian Pacif Islldr	0	0.00%	286	0.07%
Other Race	122	2.96%	9,300	2.24%
Two or More	70	1.70%	6,395	1.54%
<b>Households</b>				
Growth 2000 - 2007	26.37%		11.14%	
Growth 2007 - 2012	13.78%		6.90%	
Renter Occupied	707	40.75%	50,776	30.55%
Owner Occupied	1,028	59.25%	115,448	69.45%
<b>2007 Households by HH Income</b>				
	<b>1,735</b>		<b>166,224</b>	
Income < \$35,000	445	25.65%	62,277	37.47%
Income \$35,000 - \$74,999	810	46.69%	59,440	35.76%
Income \$75,000 - \$149,999	445	25.65%	35,207	21.18%
Income \$150,000 - \$249,999	24	1.38%	6,601	3.97%
Income \$250,000+	11	0.63%	2,699	1.62%
2007 Median Household Income	\$54,300		\$46,127	
2007 Median Age	35.40		37.40	



# Demographic Summary Report

## W Butler Rd, Greenville, SC 29607

Building Type: **Land**  
 Class: -  
 RBA: -  
 Typical Floor: -

Total Available: **0 SF**  
 % Leased: **0%**  
 Rent/SF/Yr: -



Radius	1 Mile	3 Mile	5 Mile
<b>Population</b>			
2012 Projection	4,623	34,516	94,904
2007 Estimate	4,125	31,212	87,255
2000 Census	3,365	26,172	75,787
Growth 2007 - 2012	12.10%	10.59%	8.77%
Growth 2000 - 2007	22.59%	19.26%	15.13%
<b>2007 Population by Hispanic Origin</b>	270	1,396	3,906
<b>2007 Population By Race</b>	4,125	31,212	87,255
White	2,387 57.87%	19,945 63.90%	57,791 66.23%
Black or African American	1,445 35.03%	9,392 30.09%	25,100 28.77%
American Indian and Alaska Native	17 0.41%	124 0.40%	225 0.26%
Asian	82 1.99%	659 2.11%	1,415 1.62%
Native Hawaiian and Pacific Islander	0 0.00%	53 0.17%	100 0.11%
Other Race	122 2.96%	468 1.50%	1,357 1.56%
Two or More Races	70 1.70%	572 1.83%	1,267 1.45%
<b>Households</b>			
2012 Projection	1,974	14,308	39,601
2007 Estimate	1,735	12,759	35,989
2000 Census	1,373	10,418	30,526
Growth 2007 - 2012	13.78%	12.14%	10.04%
Growth 2000 - 2007	26.37%	22.47%	17.89%
Owner Occupied	1,028 59.25%	8,472 66.40%	24,506 68.09%
Renter Occupied	707 40.75%	4,287 33.60%	11,483 31.91%
<b>2007 Households by HH Income</b>	1,735	12,759	35,988
Income Less Than \$15,000	90 5.19%	1,220 9.56%	4,031 11.20%
Income: \$15,000 - \$24,999	192 11.07%	1,274 9.99%	3,677 10.22%
Income: \$25,000 - \$34,999	163 9.39%	1,364 10.69%	4,241 11.78%
Income: \$35,000 - \$49,999	342 19.71%	2,248 17.62%	6,156 17.11%
Income: \$50,000 - \$74,999	468 26.97%	2,898 22.71%	7,274 20.21%
Income: \$75,000 - \$99,999	257 14.81%	1,790 14.03%	4,529 12.58%
Income: \$100,000 - \$149,999	188 10.84%	1,522 11.93%	4,107 11.41%
Income: \$150,000 - \$249,999	24 1.38%	352 2.76%	1,394 3.87%
Income: \$250,000 - \$499,999	6 0.35%	66 0.52%	400 1.11%
Income: \$500,000 or more	5 0.29%	25 0.20%	179 0.50%
<b>2007 Avg Household Income</b>	\$61,975	\$62,215	\$65,249
<b>2007 Med Household Income</b>	\$54,300	\$52,359	\$49,730
<b>2007 Per Capita Income</b>	\$26,063	\$25,524	\$27,010



# Daytime Employment Report

1 Mile Radius

**W Butler Rd, Greenville, SC 29607**

Building Type: **Land**                      Total Available: **0 SF**  
 Class: -    % Leased: **0%**  
 RBA: -    Rent/SF/Yr: -  
 Typical Floor: -



Business Employment by Type	# of Businesses	# Employees	#Emp/Bus
<b>Total Businesses</b>	<b>195</b>	<b>2,041</b>	<b>10</b>
<b>Total Retail</b>	<b>48</b>	<b>433</b>	<b>9</b>
Home Improvement Stores	4	14	4
General Merchandise Stores	2	34	17
Food Stores	4	77	19
Auto Dealers and Gas Stations	8	40	5
Apparel and Accessory Stores	2	9	5
Furniture and Home Furnishings	5	30	6
Eating and Drinking Places	12	190	16
Miscellaneous Retail Stores	11	39	4
<b>Finance-Insurance-Real Estate</b>	<b>21</b>	<b>123</b>	<b>6</b>
Banks, Saving and Lending Inst.	9	81	9
Security Brokers and Investments	1	3	3
Insurance Carriers and Agencies	4	12	3
Real Estate-Trust-Holding Co.	7	27	4
<b>Services</b>	<b>72</b>	<b>646</b>	<b>9</b>
Hotels and Lodging	1	4	4
Personal Services	15	46	3
Business Services	8	125	16
Motion Picture and Amusement	4	10	3
Health Services	10	66	7
Legal Services	1	11	11
Educational Services	2	100	50
Social Services	9	97	11
Other Services	22	187	9
<b>Agriculture/Mining</b>	<b>2</b>	<b>22</b>	<b>11</b>
<b>Construction</b>	<b>9</b>	<b>81</b>	<b>9</b>
<b>Manufacturing</b>	<b>14</b>	<b>228</b>	<b>16</b>
<b>Transportation, Comm./Pub Util.</b>	<b>6</b>	<b>88</b>	<b>15</b>
<b>Wholesale Trade</b>	<b>12</b>	<b>223</b>	<b>19</b>
<b>Government</b>	<b>11</b>	<b>197</b>	<b>18</b>
<b>Daytime Population</b>	<b>2,041</b>		
<b>Daytime Population/Business</b>	<b>10</b>		
<b>Residential Population</b>	<b>4,125</b>		
<b>Residential Population/Business</b>	<b>21</b>		



# Consumer Spending Report

W Butler Rd, Greenville, SC 29607

Building Type: **Land**  
 Class: -  
 RBA: -  
 Typical Floor: -  
 Total Available: **0 SF**  
 % Leased: **0%**  
 Rent/SF/Yr: -



2007 Annual Spending (in Thousands)	1 Mile	3 Mile	5 Mile
<b>Total Specified Consumer Spending</b>	<b>\$74,997</b>	<b>\$554,646</b>	<b>\$1,565,463</b>
<b>Total Apparel</b>	<b>\$7,223</b>	<b>\$54,303</b>	<b>\$155,128</b>
Women's Apparel	2,019	15,411	43,857
Men's Apparel	1,448	10,955	31,184
Girl's Apparel	496	3,575	10,025
Boy's Apparel	395	2,955	8,423
Infant Apparel	216	1,488	3,963
Footwear (excl. Infants)	816	6,115	17,248
Other Apparel Prod/Services	1,833	13,805	40,428
<b>Total Entertainment</b>	<b>\$9,232</b>	<b>\$68,702</b>	<b>\$196,555</b>
Sports and Recreation	2,628	19,656	56,555
TV, Radio and Sound Equipment	3,401	24,915	70,075
Reading Materials	779	5,802	16,807
Travel	2,352	17,790	51,599
Photographic Equipment	73	538	1,518
<b>Total Food At Home</b>	<b>\$5,381</b>	<b>\$40,599</b>	<b>\$114,233</b>
Cereal Products	433	3,257	9,155
Bread & Bakery Products	693	5,299	14,968
Fish and Seafood	196	1,490	4,226
Meats (All)	2,027	15,111	42,272
Dairy Products	929	7,077	19,978
Fruits and Vegetables	1,103	8,366	23,634
<b>Total Food Away From Home</b>	<b>\$6,472</b>	<b>\$47,867</b>	<b>\$135,186</b>
Breakfast and Brunch	710	5,160	14,446
Dinner	2,231	16,695	47,522
Lunch	2,382	17,465	49,140
Snacks and Non Alcoholic Bev	1,045	7,739	21,709
Catered Affairs	103	807	2,369

## Consumer Spending Report

W Butler Rd, Greenville, SC 29607

Annual Spending (in Thousands)	1 Mile	3 Mile	5 Mile
<b>Total Alcoholic Beverages</b>	<b>\$2,289</b>	<b>\$16,905</b>	<b>\$48,237</b>
Alcoholic Bev. at Home	1,587	11,659	33,081
Alcoholic Bev. away from Home	702	5,246	15,155
<b>Total Furniture/Appliances</b>	<b>\$3,868</b>	<b>\$29,654</b>	<b>\$85,240</b>
Bedroom Furniture	379	2,845	8,114
Living Room Furniture	576	4,414	12,816
Other Living & Family Room Furniture	154	1,188	3,468
Other Furniture	367	2,814	8,169
Major Appliances	547	4,267	12,204
Small Appliances	1,005	7,617	21,976
Misc Household Equipment	840	6,509	18,493
<b>Total Transportation/Maint.</b>	<b>\$30,074</b>	<b>\$217,069</b>	<b>\$601,003</b>
New Autos/Trucks/Vans	5,056	37,218	104,724
Used Vehicles	4,274	29,964	80,722
Boats and Outboard Motor, Etc.	573	4,200	12,214
Gasoline	3,338	24,114	66,526
Diesel Fuel	26	181	494
Automotive Maintenance/Repair	3,132	22,738	62,817
Transportation	13,675	98,655	273,506
<b>Total Health Care</b>	<b>\$6,792</b>	<b>\$51,314</b>	<b>\$146,440</b>
Medical Services	3,008	22,491	63,912
Prescription Drugs	3,556	27,103	77,633
Medical Supplies	228	1,720	4,895
<b>Total Education/Day Care</b>	<b>\$4,312</b>	<b>\$33,578</b>	<b>\$101,069</b>
Education	1,969	15,421	46,728
Room and Board	139	1,185	3,640
Tuition/School Supplies	1,829	14,236	43,088
Day Care, Nursery & Preschool	375	2,737	7,614