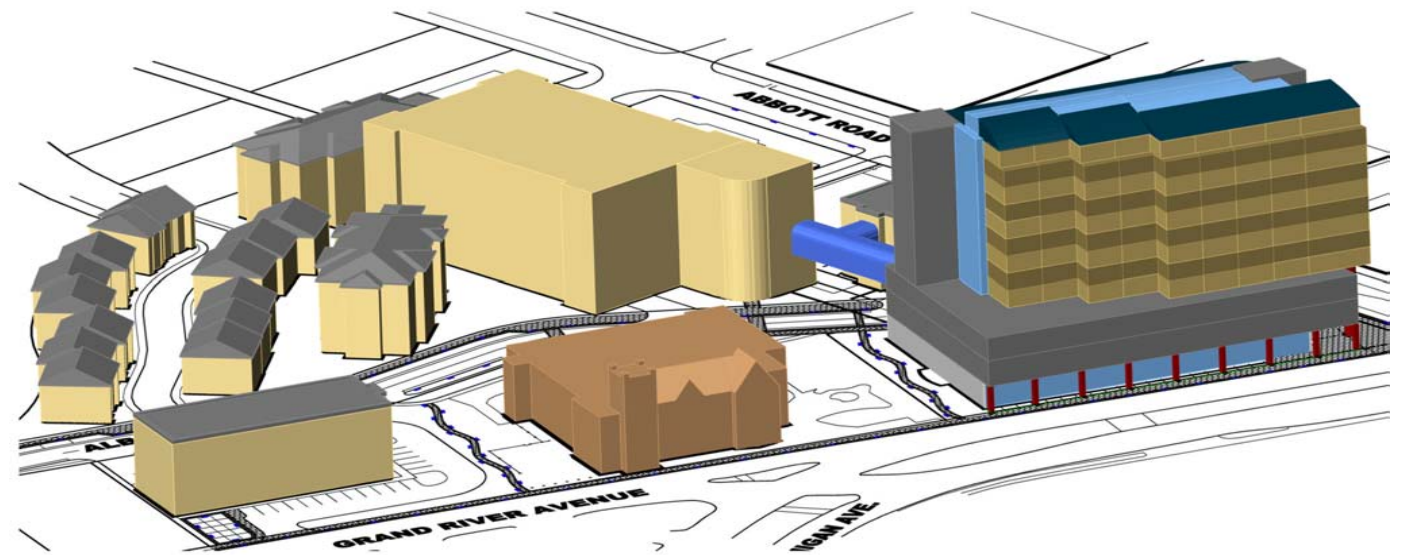


MICHIGAN MUSEUM PLACE RETAIL SITES AVAILABLE EAST LANSING, MICHIGAN



- LOCATION:**
- Downtown East Lansing, directly adjacent to Michigan State University and 44,836 students and directly across the street from the Student Union.
 - Strategically located with 30,800 daily traffic counts where Grand River and Michigan Avenue meet Abbott Road.

- DESCRIPTION:**
- 10 story, 251,330 SF mixed-use, Building A with 27,250 SF main floor retail fronting Grand River Avenue and Abbott Road. Two additional Buildings with 9,000 SF of main floor retail on Grand River Avenue and Abbott Road.
 - Plans for Building A include 95,650 SF of Michigan State University Exhibit Museum and Conference Center on 2nd thru 4th Floors with office and residential above.
 - Over 600 unit parking structure with direct access for your patrons.

DEMOGRAPHIC HIGHLIGHTS (2006)

	1 Mile	3 Mile	5 Mile
Population	25,860	83,661	166,793
Households	7,193	30,220	66,534
Median Age	22.2	24.6	28.6
Median Income	\$29,966	\$41,615	\$44,165

2006 AADT: Grand River Avenue - 30,800 Vehicles Per Day

Provided by: 2006 ESRI

FOR FURTHER LEASING INFORMATION, PLEASE CONTACT:

- TERRY BENTON:** (517) 664-4128
Retail terryb@strathmoredev.com
- TARWYN ROUSE:** (517) 664-4137
Office/Residential tarwynr@strathmoredev.com

1427 W Saginaw, Suite 200
East Lansing MI 48823



No warranty or representation is made by owner, and the foregoing is subject to correction, change of price, or withdrawal without notice.