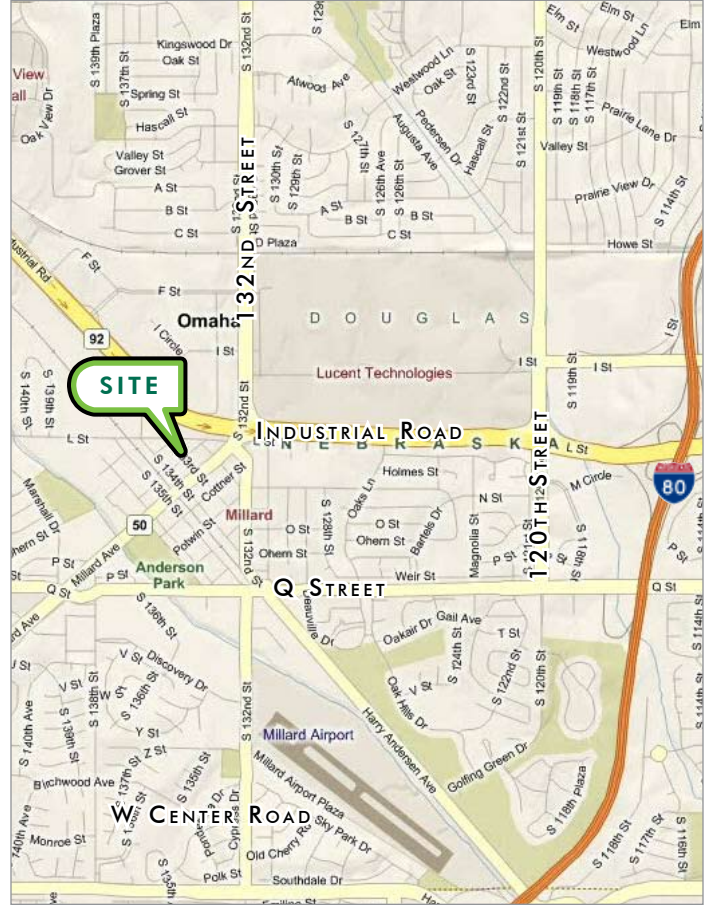


FOR LEASE

4852 S 133RD STREET MILLARD MIDTOWN PLAZA

OMAHA, NEBRASKA 68137



AVAILABLE SPACE AND LEASE RATE

::	<u>OFFICE:</u>			
::	Bay	Size	Price	
	13302-1B	261 SF	\$ 250.00 per month	
	13302-2B	311 SF	\$ 300.00 per month	
	4852 - 101	1,800 SF	\$ 9.00 PSF, NNN	
::	<u>INDUSTRIAL:</u>			
::	Bay	Size	Price	
	4852 - 107	1,800 SF	\$ 4.00 PSF, NNN	

FOR MORE
INFORMATION
PLEASE
CONTACT

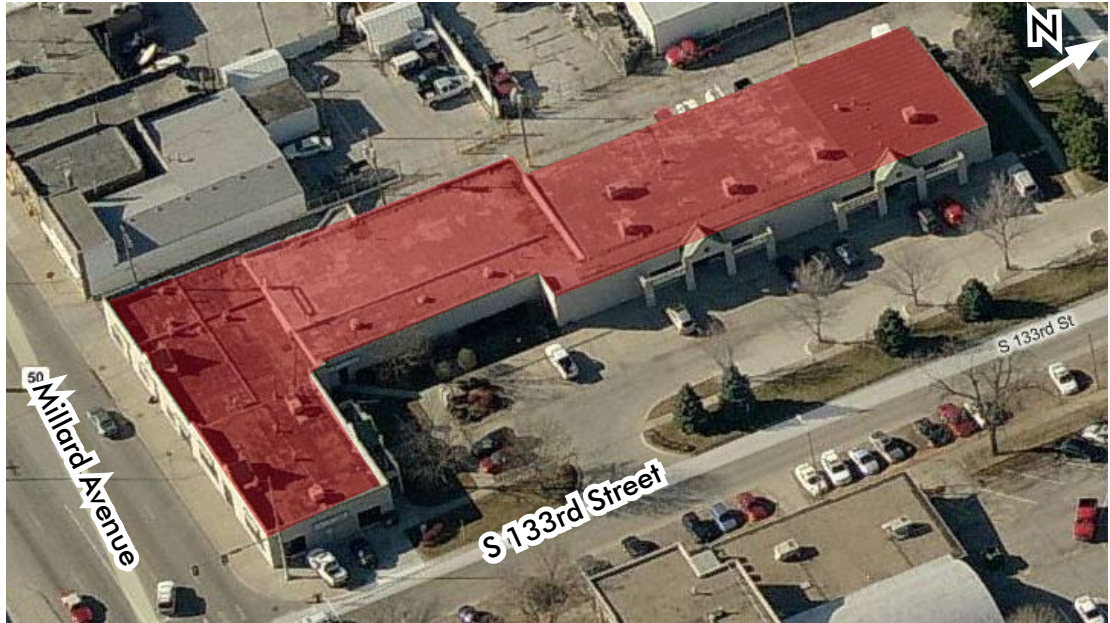
Seth V. Campbell
Associate
402.557.6003
seth.campbell@cbre.com

FOR LEASE

4852 S 133RD STREET MILLARD MIDTOWN PLAZA

OMAHA, NEBRASKA 68137

AERIAL



- FEATURES AND BUILDING INFORMATION**
- :: Prime office/commercial lot along Millard Avenue
 - :: Perfect location for medical, office or retail use
 - :: Commercial/Mixed-Use zoning
 - :: This 21,870 SF concrete building has one floor and basement
 - :: Built in 1957, renovated in 1990
 - :: Building also has drive-in doors
 - :: Bays 101 and 107 can be combined to accommodate 1,800 SF office and 1,700 SF warehouse

FOR MORE
INFORMATION
PLEASE
CONTACT

Seth V. Campbell

Associate

402.557.6003

seth.campbell@cbre.com

CB Richard Ellis | MEGA | 11213 Davenport | Suite 300 | Omaha, NE 68154 |

rev071009db © 2009 CB Richard Ellis, Inc. This information has been obtained from sources believed reliable. We have not verified it and make no guarantee, warranty or representation about it. Any projections, opinions, assumptions or estimates used are for example only and do not represent the current or future performance of the property. You and your advisors should conduct a careful, independent investigation of the property to determine to your satisfaction the suitability of the property for your needs.

CBRE | MEGA
CB RICHARD ELLIS